

SCHEDULE			
PART	LOT/CONCESSION	PIN	AREA m ²
1	PART OF TRAVELLED ROAD THROUGH LOT 64, GERMAN COMPANY TRACT	PART OF 22214-0005	281±
2			346±

PLAN 58R-21367

Received and deposited

March 11th, 2022

Lucy Wang

Representative for the
Land Registrar for the
Land Titles Division of
Waterloo (No.58)

PLAN OF SURVEY OF
PART OF TRAVELLED ROAD
THROUGH LOT 64
GERMAN COMPANY TRACT
TOWNSHIP OF WOOLWICH
REGIONAL MUNICIPALITY OF
WATERLOO

SCALE 1 : 500
0 5 10 20 30 meters
VAN HARTEN SURVEYING INC.

THE INTENDED PLOT SIZE OF THIS PLAN IS 610 mm
IN WIDTH BY 457 mm IN HEIGHT WHEN PLOTTED
AT A SCALE OF 1: 500

LEGEND:

□	DENOTES SURVEY MONUMENT SET
■	DENOTES SURVEY MONUMENT FOUND
SIB	DENOTES .025 X .025 X 1.20 STANDARD IRON BAR
IB	DENOTES .015 X .015 X 0.60 IRON BAR
MMM	DENOTES MARSHALL MACKLIN MONAGHAN LTD. O.L.S.'S
VH	DENOTES VAN HARTEN SURVEYING INC., O.L.S.'S
1114	DENOTES METZ & LORENTZ LTD. O.L.S.'S
P1	DENOTES PLAN 58R-10270 BY (1114)
P2	DENOTES PLAN 58R-10331 BY (1114)

BEARING AND COORDINATE NOTE:

- BEARINGS ARE GRID BEARINGS AND ARE DERIVED FROM GPS OBSERVATIONS AND ARE REFERRED TO THE UTM PROJECTION, ZONE 17, NAD 83 (CSRS-2010) ADJUSTMENT.
- DISTANCES SHOWN ON THIS PLAN ARE ADJUSTED GROUND DISTANCES AND CAN BE CONVERTED TO GRID DISTANCES BY MULTIPLYING BY AN AVERAGED COMBINED SCALE FACTOR OF 0.999575.
- COORDINATES ON THIS PLAN ARE UTM, ZONE 17, NAD83 (CSRS-2010) ADJUSTMENT AND ARE BASED ON GPS OBSERVATIONS FROM A NETWORK OF PERMANENT GPS REFERENCE STATIONS.

UTM COORDINATES (METRES)		
POINT ID	NORTHING	EASTING
A	4 831 010.14	542 127.24
B	4 830 976.59	542 186.44
C	4 830 942.36	542 258.68
THESE COORDINATE VALUES COMPLY WITH SECTION 14(2) O.REG 216/10. THESE COORDINATES CANNOT, IN THEMSELVES, BE USED TO RE-ESTABLISH THE CORNERS OR BOUNDARIES SHOWN ON THIS PLAN.		

METRIC:

DISTANCES AND COORDINATES SHOWN ON THIS PLAN ARE IN METRES AND CAN BE CONVERTED TO FEET BY DIVIDING BY 0.3048.

SURVEYOR'S CERTIFICATE

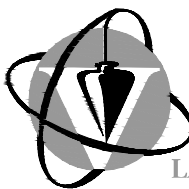
I CERTIFY THAT:

- THIS SURVEY AND PLAN ARE CORRECT AND IN ACCORDANCE WITH THE SURVEYS ACT, THE SURVEYORS ACT, THE LAND TITLES ACT AND THE REGULATIONS MADE UNDER THEM.
- THIS SURVEY WAS COMPLETED ON THE 4th DAY OF FEBRUARY, 2022.

DATE: FEBRUARY 7, 2022

RONALD MAK
ONTARIO LAND SURVEYOR

THIS PLAN OF SURVEY RELATES TO AOLS PLAN
SUBMISSION FORM NUMBER 2156415.



Van Harten
SURVEYING INC.
LAND SURVEYORS AND ENGINEERS

Kitchener/Waterloo Ph: 519-742-8371	Guelph Ph: 519-821-2763	Orangeville Ph: 519-940-4110
--	----------------------------	---------------------------------

www.vanharten.com info@vanharten.com

DRAWN BY: PJ	CHECKED BY: RM	PROJECT No. 29545-21
--------------	----------------	----------------------

Feb 7, 2022 4:27:58 PM
M:\Geographic(KW)\Woolwich\GCT 60-64\ACAD\R PLAN LT 60,64 GCT 60 (29545-21) (UTM2010).dwg

BEARING COMPARISONS:

FOR THE PURPOSES OF BEARING COMPARISONS, PREVIOUS SURVEYS HAVE BEEN ROTATED TO UTM BEARINGS BY THE ANGLES SHOWN BELOW.

PLAN	ROTATION FOR NORTHEAST BEARINGS
P1, P2	-0°26'35"

Representative for the
Land Registrar for the
Land Titles Division of
Waterloo (No.58)

SCALE 1 : 1250

0 10 20 40 60 meters

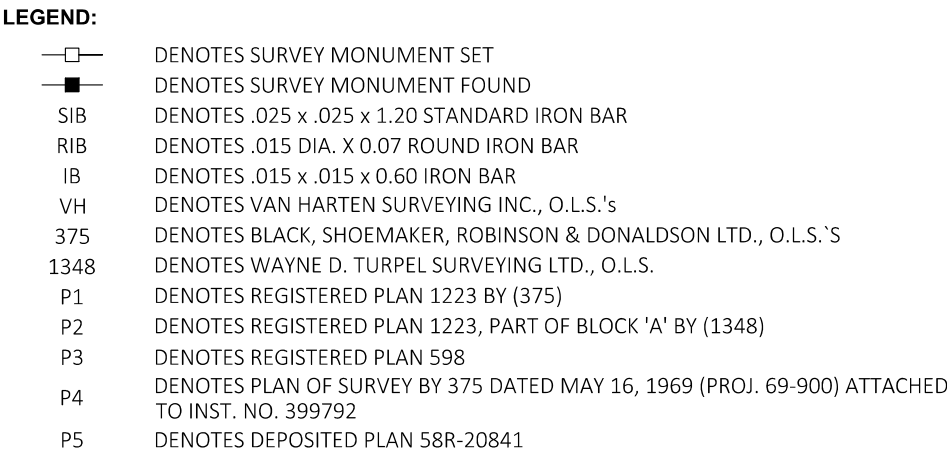
VAN HARTEN SURVEYING INC.

1. BEARINGS ARE GRID BEARINGS AND ARE DERIVED FROM GPS OBSERVATIONS AND ARE REFERRED TO THE UTM PROJECTION, ZONE 17, NAD 83 (CSRS-2010) ADJUSTMENT.
2. DISTANCES SHOWN ON THIS PLAN ARE ADJUSTED GROUND DISTANCES AND CAN BE CONVERTED TO GRID DISTANCES BY MULTIPLYING BY AN AVERAGED COMBINED SCALE FACTOR OF 0.999576.
3. COORDINATES ON THIS PLAN ARE UTM, ZONE 17, NAD83 (CSRS-2010) ADJUSTMENT AND ARE BASED ON GPS OBSERVATIONS FROM A NETWORK OF PERMANENT GPS REFERENCE STATIONS.

METRIC:
DISTANCES AND COORDINATES SHOWN ON THIS PLAN ARE IN METRES AND CAN BE
CONVERTED TO FEET BY DIVIDING BY 0.3048.

BEARING COMPARISONS:
FOR THE PURPOSES OF BEARING COMPARISONS, PREVIOUS SURVEYS HAVE BEEN ROTATED TO UTM BEARINGS BY THE ANGLES SHOWN BELOW.

 <h1 style="display: inline;">Van Harten</h1> SURVEYING INC. LAND SURVEYORS and ENGINEERS		
Kitchener/Waterloo Ph: 519-742-8371	Guelph Ph: 519-821-2763	Orangeville Ph: 519-940-4110
www.vanharten.com		info@vanharten.com
DRAWN BY: PJ	CHECKED BY: RM	PROJECT No. 29542-21
Feb 7, 2022-2:20:51 PM M:\Geographic(KW)\Woolwich\598\ACAD\R PLAN LT 2-4 PL 598 (29542-21) (UTM2010).dwg		



I CERTIFY THAT:

1. THIS SURVEY AND PLAN ARE CORRECT AND IN ACCORDANCE WITH THE SURVEYS ACT, THE SURVEYORS ACT, THE LAND TITLES ACT AND THE REGULATIONS MADE UNDER THEM.

2. THIS SURVEY WAS COMPLETED ON THE 4th DAY OF FEBRUARY, 2022.

DATE: FEBRUARY 7, 2022

RONALD MAK
ONTARIO LAND SURVEYOR

THIS PLAN OF SURVEY RELATES TO AOLS PLAN
SUBMISSION FORM NUMBER 2156417.