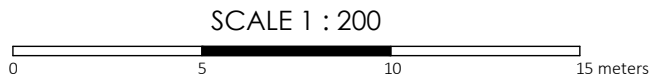


PLAN OF SURVEY OF
LOT 4, REGISTERED PLAN 58M-661
TOWNSHIP OF WOOLWICH
REGIONAL MUNICIPALITY OF WATERLOO



VAN HARTEN SURVEYING INC.

THE INTENDED PLOT SIZE OF THIS PLAN IS 508mm
IN WIDTH BY 457mm IN HEIGHT WHEN PLOTTED AT
A SCALE OF 1:200

SCHEDULE				
PART	LOT / BLOCK	PLAN	PIN	AREA m²
1	ALL OF LOT 4	58M-661	ALL OF PIN 22233-1039	288.00
2				366.62

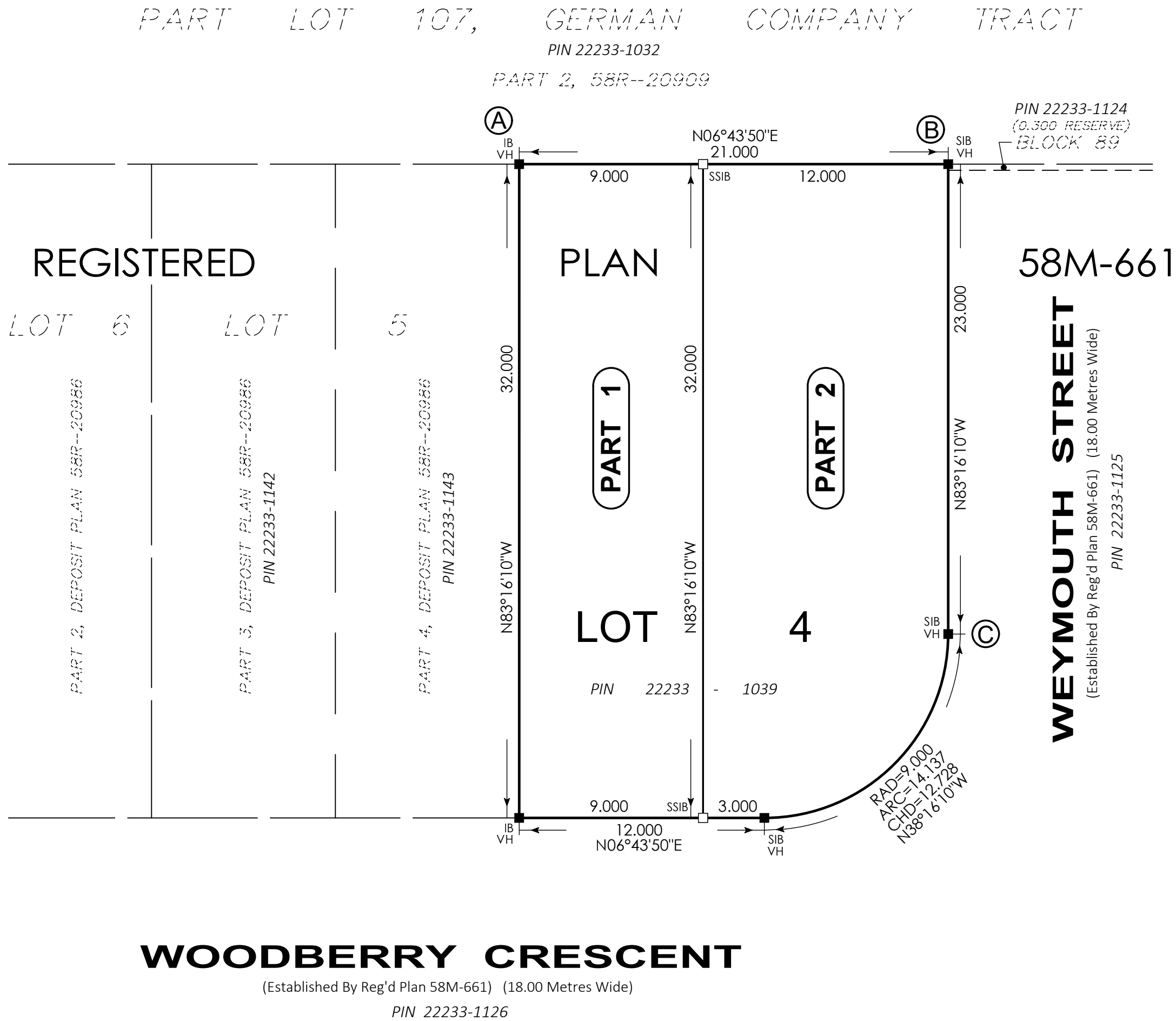
PLAN 58R-21204

Received and deposited

August 25th, 2021

Cheryl Langkamer

Representative for the
Land Registrar for the
Land Titles Division of
Waterloo (No.58)



- LEGEND:
- DENOTES SURVEY MONUMENT SET
 - DENOTES SURVEY MONUMENT FOUND
 - SIB DENOTES .025 x .025 x 1.20 STANDARD IRON BAR
 - IB DENOTES .015 x .015 x 0.60 IRON BAR
 - SSIB DENOTES .025 x .025 x 0.60 SHORT STANDARD IRON BAR
 - RP DENOTES .015 DIA. X 0.07 ROUND IRON BAR WITH STAMPED WASHER
 - PB DENOTES .025 x .025 x 0.30 PLASTIC BAR
 - CC DENOTES CUT CROSS
 - WIT DENOTES WITNESS
 - OU DENOTES ORIGIN UNKNOWN
 - VH DENOTES VAN HARTEN SURVEYING INC., O.L.S.'s

NOTE

ALL BARS SET ARE IB UNLESS OTHERWISE NOTED

ALL BARS ARE (VH) UNLESS OTHERWISE NOTED

METRIC: DISTANCES AND COORDINATES SHOWN ON THIS PLAN ARE IN METRES AND CAN BE CONVERTED TO FEET BY DIVIDING BY 0.3048.

SURVEYOR'S CERTIFICATE

I CERTIFY THAT:

- THIS SURVEY AND PLAN ARE CORRECT AND IN ACCORDANCE WITH THE SURVEYS ACT, THE SURVEYORS ACT, THE LAND TITLES ACT AND THE REGULATIONS MADE UNDER THEM.
- THIS SURVEY WAS COMPLETED ON THE 3rd DAY OF AUGUST, 2021.

DATE: AUGUST 17, 2021

JOHN S. SCOTT
ONTARIO LAND SURVEYOR

THIS PLAN OF SURVEY RELATES TO AOLS PLAN SUBMISSION FORM NUMBER 2173547.

- BEARING AND COORDINATE NOTE:
- BEARINGS ARE GRID BEARINGS AND ARE DERIVED FROM GPS OBSERVATIONS AND ARE REFERRED TO THE UTM PROJECTION, ZONE 17, NAD 83 (CSRS-2010) ADJUSTMENT.
 - DISTANCES SHOWN ON THIS PLAN ARE ADJUSTED GROUND DISTANCES AND CAN BE CONVERTED TO GRID DISTANCES BY MULTIPLYING BY AN AVERAGED COMBINED SCALE FACTOR OF 0.999563.
 - COORDINATES ON THIS PLAN ARE UTM, ZONE 17, NAD83 (CSRS-2010) ADJUSTMENT AND ARE BASED ON GPS OBSERVATIONS FROM A NETWORK OF PERMANENT GPS REFERENCE STATIONS.

UTM COORDINATES (METRES)		
POINT ID	NORTHING	EASTING
A	4,825,345.27	534,601.64
B	4,825,366.11	534,604.10
C	4,825,363.42	534,626.93
THESE COORDINATE VALUES COMPLY WITH SECTION 14(2) O.REG 216/10. THESE COORDINATES CANNOT, IN THEMSELVES, BE USED TO RE-ESTABLISH THE CORNERS OR BOUNDARIES SHOWN ON THIS PLAN.		

Van Harten
SURVEYING INC.
LAND SURVEYORS and ENGINEERS

Waterloo Ph: 519-742-8371	Guelph Ph: 519-821-2763	Orangeville Ph: 519-940-4110
www.vanharten.com		info@vanharten.com
DRAWN BY: T.M.L.	CHECKED BY: J.S.S.	PROJECT No. 28323-20
Aug 17, 2021-7:21:36 AM G:\WOOLWICH\58M-661\ACAD\REFERENCE PLAN (LOT 4).dwg		