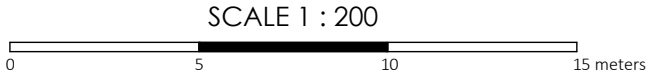


PLAN OF SURVEY OF
LOT 70 AND 71, REGISTERED PLAN 58M-661
TOWNSHIP OF WOOLWICH
REGIONAL MUNICIPALITY OF WATERLOO



VAN HARTEN SURVEYING INC.

THE INTENDED PLOT SIZE OF THIS PLAN IS 508mm
IN WIDTH BY 457mm IN HEIGHT WHEN PLOTTED AT
A SCALE OF 1:200

WOODBERRY CRESCENT

(Established By Reg'd Plan 58M-661) (18.00 Metres Wide)

PIN 22233-1126

SCHEDULE				
PART	LOT / BLOCK	PLAN	PIN	AREA m²
1	ALL OF LOT 70	58M-661	ALL OF PIN 22233-1105	288.00
2				288.00
3	ALL OF LOT 71	58M-661	ALL OF PIN 22233-1106	288.00
4				288.00

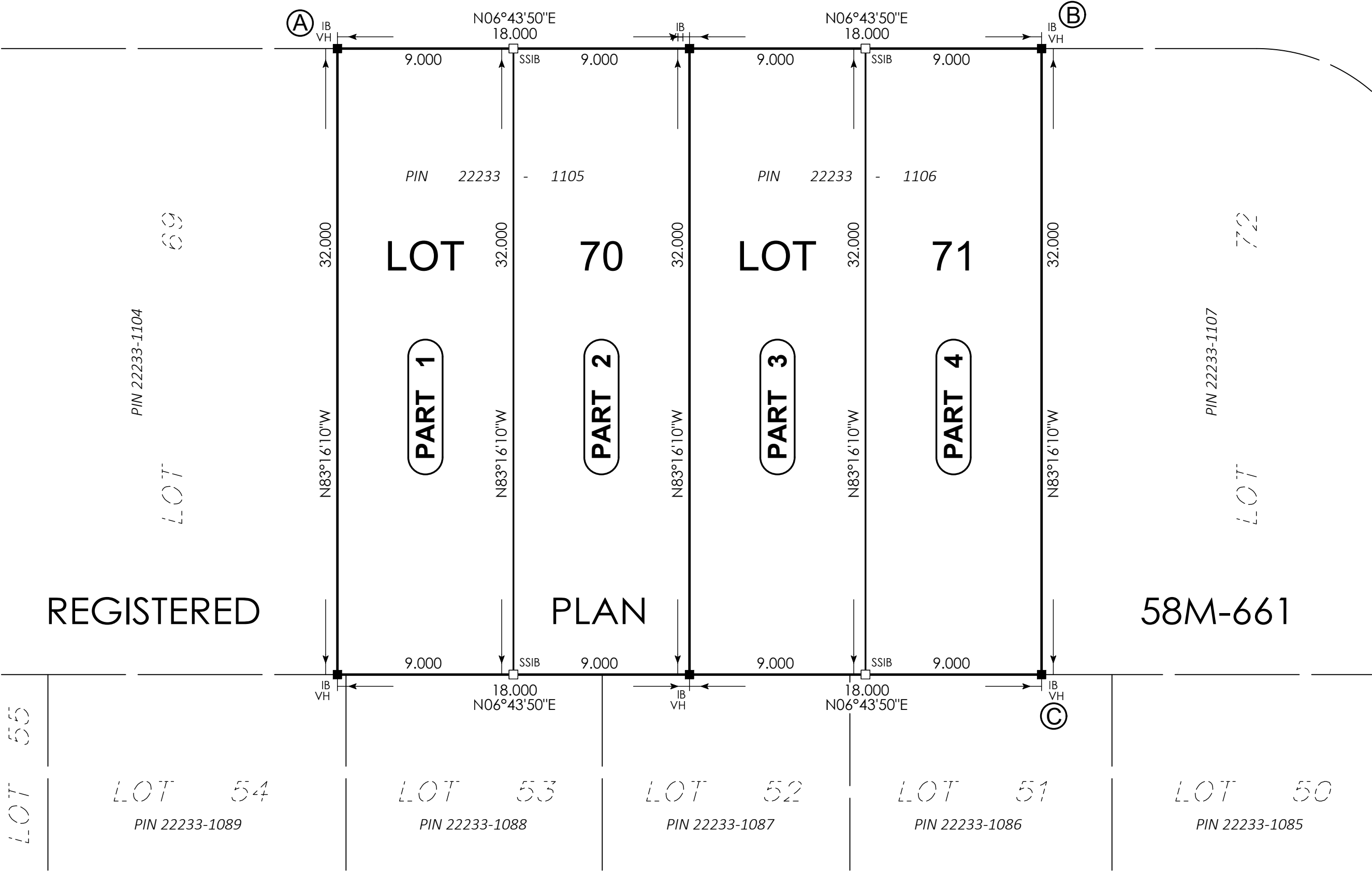
PLAN 58R-21203

Received and deposited

August 25th, 2021

Rhonda Lane

Representative for the
Land Registrar for the
Land Titles Division of
Waterloo (No.58)



- LEGEND:
- DENOTES SURVEY MONUMENT SET
 - DENOTES SURVEY MONUMENT FOUND
 - SIB DENOTES .025 x .025 x 1.20 STANDARD IRON BAR
 - IB DENOTES .015 x .015 x 0.60 IRON BAR
 - SSIB DENOTES .025 x .025 x 0.60 SHORT STANDARD IRON BAR
 - RP DENOTES .015 DIA. X 0.07 ROUND IRON BAR WITH STAMPED WASHER
 - PB DENOTES .025 x .025 x 0.30 PLASTIC BAR
 - CC DENOTES CUT CROSS
 - WIT DENOTES WITNESS
 - OU DENOTES ORIGIN UNKNOWN
 - VH DENOTES VAN HARTEN SURVEYING INC., O.L.S.'s

NOTE

ALL BARS SET ARE IB UNLESS OTHERWISE NOTED

ALL BARS ARE (VH) UNLESS OTHERWISE NOTED

METRIC: DISTANCES AND COORDINATES SHOWN ON THIS PLAN ARE IN METRES AND CAN BE CONVERTED TO FEET BY DIVIDING BY 0.3048.

SURVEYOR'S CERTIFICATE

- I CERTIFY THAT:
- THIS SURVEY AND PLAN ARE CORRECT AND IN ACCORDANCE WITH THE SURVEYS ACT, THE SURVEYORS ACT, THE LAND TITLES ACT AND THE REGULATIONS MADE UNDER THEM.
 - THIS SURVEY WAS COMPLETED ON THE 3rd DAY OF AUGUST, 2021.

DATE: AUGUST 17, 2021

JOHN S. SCOTT
ONTARIO LAND SURVEYOR

THIS PLAN OF SURVEY RELATES TO AOLS PLAN
SUBMISSION FORM NUMBER 2173546.

BEARING AND COORDINATE NOTE:

- BEARINGS ARE GRID BEARINGS AND ARE DERIVED FROM GPS OBSERVATIONS AND ARE REFERRED TO THE UTM PROJECTION, ZONE 17, NAD 83 (CSRS-2010) ADJUSTMENT.
- DISTANCES SHOWN ON THIS PLAN ARE ADJUSTED GROUND DISTANCES AND CAN BE CONVERTED TO GRID DISTANCES BY MULTIPLYING BY AN AVERAGED COMBINED SCALE FACTOR OF 0.999563.
- COORDINATES ON THIS PLAN ARE UTM, ZONE 17, NAD83 (CSRS-2010) ADJUSTMENT AND ARE BASED ON GPS OBSERVATIONS FROM A NETWORK OF PERMANENT GPS REFERENCE STATIONS.

UTM COORDINATES (METRES)		
POINT ID	NORTHING	EASTING
A	4,825,304.67	534,647.18
B	4,825,340.40	534,651.39
C	4,825,336.65	534,683.16
THESE COORDINATE VALUES COMPLY WITH SECTION 14(2) O. REG 216/10. THESE COORDINATES CANNOT, IN THEMSELVES, BE USED TO RE-ESTABLISH THE CORNERS OR BOUNDARIES SHOWN ON THIS PLAN.		



Van Harten
SURVEYING INC.
LAND SURVEYORS and ENGINEERS

Waterloo Ph: 519-742-8371 Guelph Ph: 519-821-2763 Orangeville Ph: 519-940-4110

www.vanharten.com info@vanharten.com

DRAWN BY: T.M.L. CHECKED BY: J.S.S. PROJECT No. 28323-20

Aug 17, 2021-7:19:10 AM
G:\WOOLWICH\58M-661\ACAD\REFERENCE PLAN (LOTS 70 AND 71).dwg