

March 21, 2023

File No. 20258

Development Services (Planning Services)  
Township of Woolwich Administration Office  
24 Church Street West  
Elmira, Ontario N3B 2Z6

(via e-mail)

Attn: Jeremy Vink, MCIP, RPP  
Manager of Planning

**Re: Applications for Official Plan Amendment & Zoning By-law Amendment  
39 Arthur Street North, Elmira (39A Holdings Ltd.)  
Proposed Truck and Tractor-Trailer Parking Lot Expansion**

---

Dear Jeremy:

Further to the Township Committee of the Whole meeting on March 7, 2023, and follow up meeting with yourself on March 10, 2023, we have prepared the following supplementary information to Township staff and Council relating to the tree removals/replacements and anticipated traffic for the proposed tractor-trailer parking lot expansion on the property municipally known as 39 Arthur Street North, Elmira ("Site"):

- Additional Information to Address Comments Regarding Impacts to Local Traffic, prepared by RJ Burnside (dated March 17, 2023);
- Summary of the Tree Inventory Preservation Plan, prepared by NRSI; and,
- Proposed tree planting visualization, prepared by NRSI;
- Proposed Development Plan illustrating the lands to be conveyed to the Township and the area of trees to be retained and enhanced between the parking lot and Bolender Park; and,
- View from Bolender Park showing the current tree screen and post development tree screen illustrating the maintenance of a thick tree screen.

A summary of the findings included in the attachments noted above has been provided below for ease of reference.

### Traffic

A response letter from RJ Burnside has been prepared to provide further information about the anticipated traffic counts related to the proposed tractor-trailer parking lot expansion. The response letter indicates that although the application references 115 tractor-trailer parking spaces, 62 of the parking spaces are within the area of the former scrap yard and are currently designated/zoned to

permit the parking lot. There are 53 new parking spaces proposed within the expansion area, which are the focus of the response letter.

The additional 53 parking spaces will provide parking for local businesses that currently operate within the Elmira area and would likely already be contributing to traffic area in the immediate vicinity of the Site. Further, based on other locations owned/operated by the landowner of the Site, it is anticipated that the additional 53 parking spaces would result in a total of 0.5 movements per hour, or approximately 4 truck movements per day. Of the projected 4 movements per day, approximately half (50%) would travel northbound, and approximately half (50%) would travel southbound. This results in approximately 2 trucks per day driving through the downtown Elmira core, which would be no appreciable impact to traffic flow in Elmira.

To address Council's concerns with the potential for redevelopment on the Site, it is proposed that a holding (H) provision is included on the overall zoning for the Site to indicate that prior to any redevelopment of the Site for uses permitted in the "M1" zone that would generate more traffic than the tractor-trailer parking lot (e.g., wholesale outlet, warehouse / indoor storage, contractors, building supplies, dealer/outlet), a detailed traffic impact study would be required. It is noted that prior to any change of use on the Site, a site plan application would be required which would address any further reports/studies needed to support the development.

#### Tree Compensation

As demonstrated in the table below, a total of 386 trees are anticipated to be removed to facilitate the gravel parking lot expansion. Of the 386 trees proposed for removal, 184 trees have been categorized as 'Dead / Very Poor / Poor Trees' and 198 trees have been categorized as 'Invasive Trees'. Only 4 trees proposed to be removed are either healthy and/or native species. A total of 202 trees have been identified as requiring replacement in accordance with the Township's tree replacement guidelines. It is noted that the replacement trees will be native species and are proposed to be replaced in a variety of sizes, depending on their location on the Site.

A summary of the trees to be removed have been included below and detailed further under separate cover. Further, a visualization of the various sizes of trees that will be replanted has been included under separate cover for reference.

Category	Tree Count
Dead/Very Poor/ Poor Trees to be Removed	184
Invasive Trees to be Removed	198
Other Trees to be Removed	4
<b>Total Tree Removals</b>	<b>386</b>
Total Trees Requiring Compensation	202
<b>Total Compensation Trees to be Planted</b>	<b>202</b>

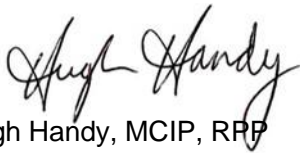
The Plan showing the lands to be conveyed to the Township and the area between Bolender Park and the edge of the parking illustrates that there will be thick tree screen maintained and enhanced.

As shown on the Plan, Bolender Park will be increased by approximately 16% ( approximately 2 acres) as part of the conveyance of lands to the Township.

The conceptual view from Bolender Park towards the property illustrates how the tree screen will be maintained.

We trust this provides the supplementary information that was requested at the Committee of the Whole meeting on March 7, 2023. If you have any questions or require any further information, please do not hesitate to reach out.

Sincerely,  
**GSP Group Inc.**

A handwritten signature in black ink that reads "Hugh Handy". The signature is fluid and cursive, with the first name "Hugh" and last name "Handy" clearly distinguishable.

Hugh Handy, MCIP, RPP  
Vice-President

cc: Robert Shapero, 39A Holdings Ltd.  
Jim Walls, RJ Burnside  
Nathan Miller, NRSI  
Tom Halinski, Aird & Berlis LLP



March 17, 2023

**Via: Email (jvink@woolwich.ca)**

Mr. Jeremy Vink  
Manager of Planning  
Township of Woolwich  
24 Church Street West P.O. Box 158  
Elmira ON N3B 2Z6

Dear Mr. Vink:

**Re: Additional Information to Address Comments Regarding Impacts to Local Traffic  
OPA/ZBA Application  
39 Arthur Street North, Elmira  
Project No.: 300051822.2000**

## **1.0 Introduction**

At the request of 39A Holdings Ltd. and in cooperation with GSP Group, R.J. Burnside & Associates Limited (Burnside) has undertaken environmental assessment studies to support the Application for an Official Plan Amendment (OPA) and Zoning By-law Amendment (ZBA) to allow outdoor storage in the form of truck trailer storage of the portion of the property at 39 Arthur Street North, Elmira that includes part of the former Township of Woolwich municipal landfill site known as the Bolander Landfill Site.

The application includes the expansion of a gravel parking lot for the parking of transport truck trailers and conveyance of a strip of land on the east side of the property connecting the Kissing Bridge Trailway to Bolandar Park to the Township and a southern eastern parcel near the creek as Parkland.

Burnside has also worked for the owner of 39 Arthur Street North on many other similar trailer parking facilities throughout southern Ontario and provide herein some additional information to address concerns about the impact of the Application on local traffic.

Although the Application references 115 trailer parking spaces 62 of these spaces are in the area of the former scrap yard and are an acceptable current use. There are 53 new spaces proposed for the expanded parking lot over the remaining unused portion of the former landfill site.

It is these proposed new 53 trailer parking sites that are the focus of this letter.

## **2.0 Trailer Parking Lot**

The owner of 39 Arthur Street, North has several other trailer parking facilities at strategic locations in southern Ontario to service local business in the nearby community.

Many businesses such as transport companies, warehouse and distribution companies do not have sufficient on-site capacity to store trailers for the medium term (many weeks) to long term (many months). They rely on local off-site facilities such as the one proposed for 39 Arthur Street North for trailer storage space.

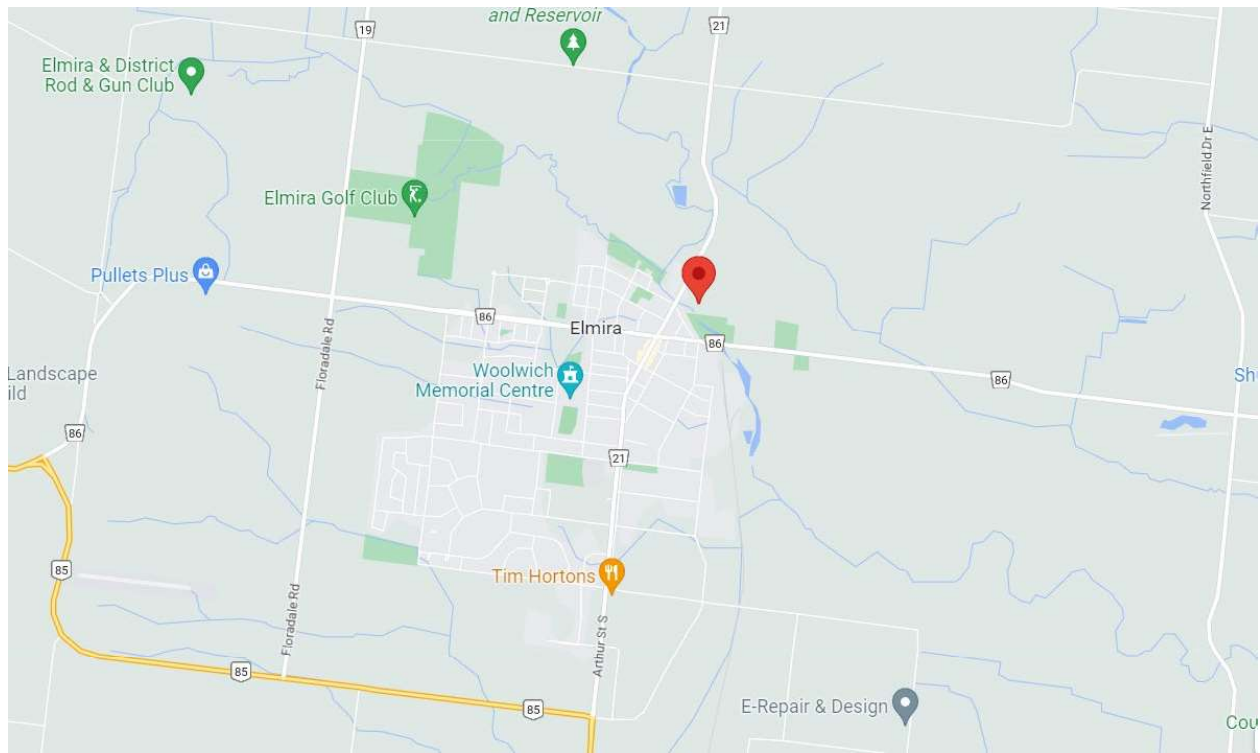
There is local demand from local businesses for trailer parking space in the Elmira area and the proposed parking lot at 39 Arthur Street North offers a strategically located low impact location for medium to long term trailer parking.

The Application to expand the trailer parking lot also makes the highest and best use of a former landfill site that has limited other uses. This avoids the need to develop more valuable lands such as agricultural and commercial lands for trailer parking.

The open-air gravel trailer parking lot use of the former landfill site has been approved by the Ministry of Environment, Conservation and Parks (MECP).

## **3.0 Local Trailer Movement Options**

The trailers proposed to be parked at 39 Arthur Street North are currently stored in less convenient places by local businesses in the greater Elmira area so overall trailer movements in the greater Elmira area will not necessarily change on balance, should local businesses make use of the parking lot at 39 Arthur Street North.



The property is strategically located at the north end of Elmira with multiple options for trailer movements in any direction. The location provides options to access the property without going into downtown Elmira.

The options include:

- North on Arthur Street North (Regional Road 21). With east and west options 1.5 km north at the junction with Reid Woods Drive (Township Road 13).
- South on Arthur Street North 0.3 km to the intersection of Church Street (Regional Road 86) with major east and west options.
- South on Arthur Street towards Hwy 85. This is the least desirable option as it goes through downtown.

Traffic flow would be expected to proceed from the parking lot at 39 Arthur Street North to the local business who owns the trailer which could be anywhere in the commercial/industrial district of greater Elmira or directly towards a destination.

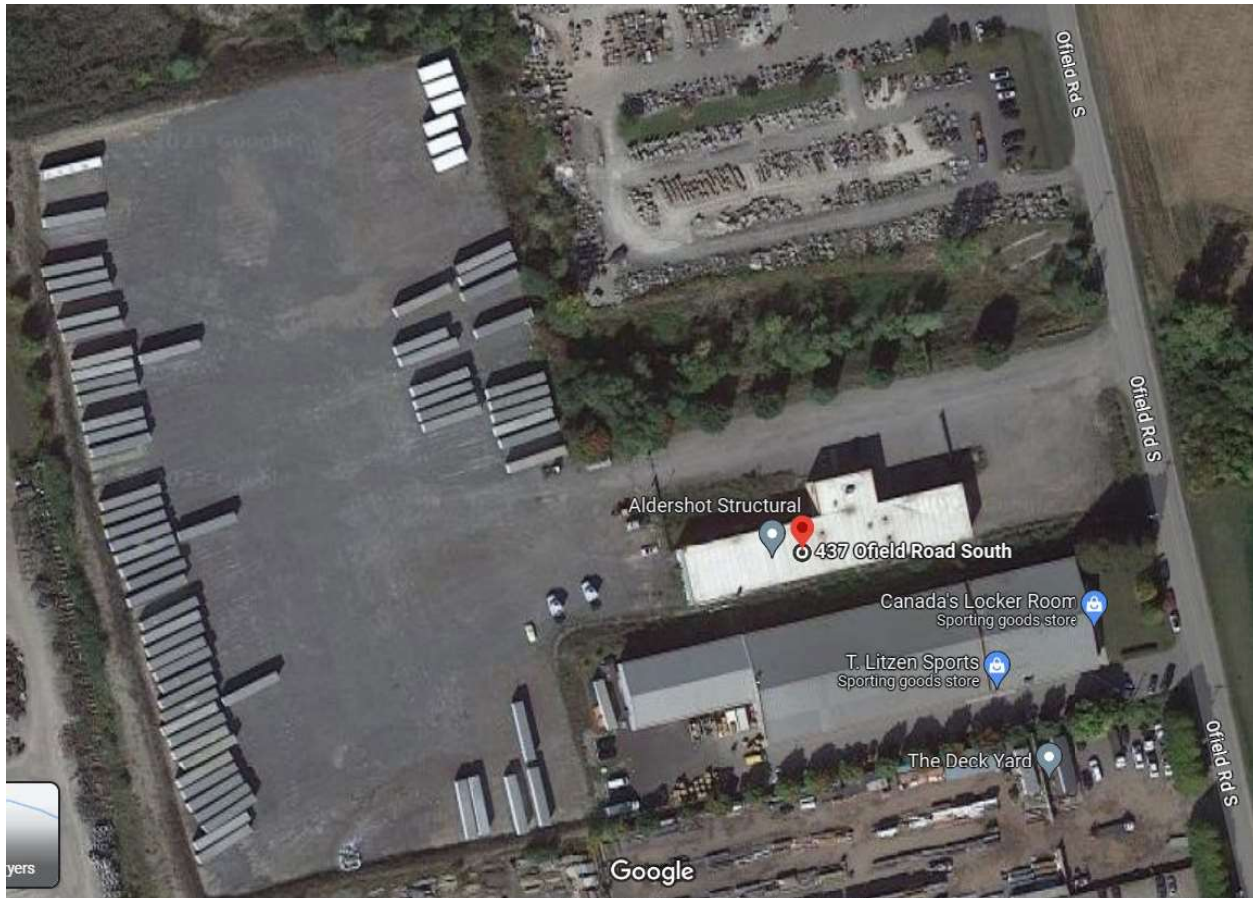
Trailers moving north, east, or west have many options to avoid the downtown.

Trailers needing to move south have options to go east or west first before proceeding south. The least desirable option would be directly south however it must be recognized that some movements will proceed in that direction.

## 4.0 Trailer Movement Estimates

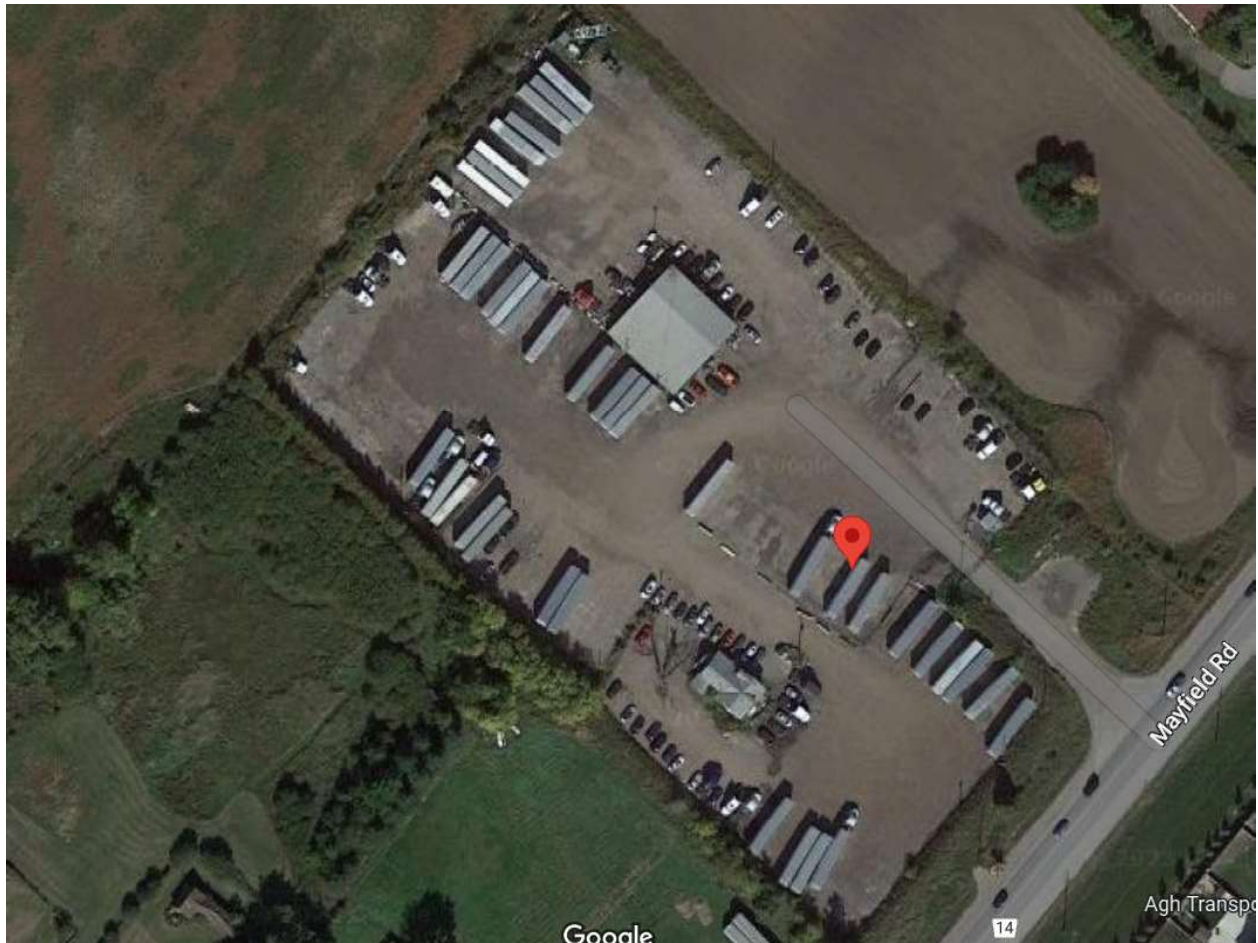
The owner of the property at 39 Arthur Street North has several other similar trailer parking facilities strategically located in commercial/industrial areas of southern Ontario to service the needs of local businesses. Burnside is familiar with many of these properties including:

### 437 Ofield Road, Hamilton





## 7072 Mayfield Road, Caledon



The trailers are stored at these parking lots by local businesses for many weeks to many months. The expanded parking lot proposed for 39 Arthur Street North is relatively small and consists of approximately 53 new spaces.



Trailer movements at other similar facilities are as follows:

- Ofield Road – 300 spaces with approximately 5 movements per day.
- Mayfield Road – 300 spaces with approximately 5 movements per day (excluding shop).

The average number of movements per day based on all similar facilities is approximately 2.5 movements per day per 100 spaces.

The expected movements for the expanded parking lot at 39 Arthur Street North of 53 spaces is estimated to be less than 2 movements/day.

The Zoning Application documents used extremely conservative calculations based on a 10 % turnover of trailer spaces for the entire site of 115 spaces not just the proposed expanded parking lot of 53 spaces. This suggested in the order of 10 movements per day for the entire site. Even based on this conservative approach the number of movements per day for the expanded parking area of 53 spaces would be in the order of 5 movements/day or approximately 0.5 movements per hour.

We also note that lots of this nature are seldom filled to 100% capacity as some capacity, although leased, is empty and not used by the business leasing it. An 80% occupancy even when 100% of the spaces are leased is usually the maximum observed in practice.

To be conservative we have used a truck movement volume of 0.5 movements per hour during a business day.

## **5.0 Local Traffic Impact**

Given the very conservative estimate of 0.5 trailer movements per hour during each business day the flow of traffic onto Arthur Street North (Regional Road 21). This would translate into 4 movements/day.

Given the movement direction options provided above and conservatively estimating that 50% of the truck movements would go in the least desirable direction towards downtown. This would constitute approximately 2 movements per day or roughly one in the morning and one in the afternoon in the least desirable direction towards downtown.

We note that these movements are likely currently being made by the owners of the trailers that are already doing business in the greater Elmira area that are currently storing trailers on their own sites or alternative properties. There for the movements may not actually constitute an overall additional traffic load.

Even using the worst-case estimates of trailer movements there should be no appreciable impact to traffic flow in Elmira.

## 6.0 Summary

The Application includes the permanent revocation of the use of the property at 39 Arthur Street North for use as a scrap yard. The new owner has cleaned up the scrap yard and replaced it with a less busy and environmentally impactful business. The number of movements in and out of the property following the closing of the scrap yard has been reduced by approximately 70%.

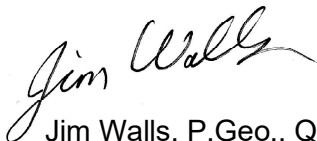
The proposed expansion of the parking lot over a former capped landfill site which has very limited suitable uses by 53 trailer parking spaces will provide the highest and best use of the property to service the needs of local Elmira businesses who need intermediate and long term storage for their truck trailers.

The traffic flow to and from the property will be overall less than the previous use of the property as a scrap yard and will have no appreciable impact to the traffic through downtown Elmira and may even reduce the traffic as local Elmira businesses moving trailers would now be hosting them at the north edge of Town where there are a wider variety of movement directions.

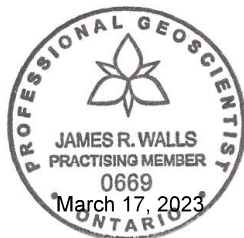
The Application for 53 additional trailer parking spaces assists local Elmira businesses and has no significant impact on local traffic while providing the best possible use of a former landfill site rather than using more valuable lands (agricultural or commercial) for trailer parking.

Yours truly,

**R.J. Burnside & Associates Limited**



Jim Walls, P.Geo., QP<sub>ESA</sub>  
Senior Geoscientist  
JW:ao



cc: Hugh Handy, GSP Group (enc.) (Via: Email) (hhandy@gspgroup.ca)

Other than by the addressee, copying or distribution of this document, in whole or in part, is not permitted without the express written consent of R.J. Burnside & Associates Limited.

230317\_Traffic Comments\_051822  
17/03/2023 9:14 AM

**39 Arthur Street North, Elmira Tree Preservation Plan**  
**Tree Inventory Data**

Tree Number	Common Name	Scientific Name	Native / Non-native	DBH (cm)	Overall Condition	Proposed Action	Rationale for Removal	Compensation Required
359	Manitoba Maple	<i>Acer negundo</i>	Invasive	26.5	Poor	Remove	Proposed Outdoor Storage	No
360	Manitoba Maple	<i>Acer negundo</i>	Invasive	27.6	Fair	Remove	Proposed Outdoor Storage	Yes
361	Manitoba Maple	<i>Acer negundo</i>	Invasive	16.4, 18.8	Fair	Remove	Proposed Outdoor Storage	Yes
362	Manitoba Maple	<i>Acer negundo</i>	Invasive	31.9	Fair	Remove	Proposed Outdoor Storage	Yes
363	Manitoba Maple	<i>Acer negundo</i>	Invasive	22.7, 18.6, 16.0, 12.9	Fair	Remove	Proposed Outdoor Storage	Yes
364	Manitoba Maple	<i>Acer negundo</i>	Invasive	13.9, 13.8, 13.4	Fair	Remove	Proposed Outdoor Storage	Yes
365	Manitoba Maple	<i>Acer negundo</i>	Invasive	21.7	Poor	Remove	Proposed Outdoor Storage	No
366	Manitoba Maple	<i>Acer negundo</i>	Invasive	16.2, 13.2	Fair	Remove	Proposed Outdoor Storage	Yes
367	Manitoba Maple	<i>Acer negundo</i>	Invasive	17.9	Fair	Remove	Proposed Outdoor Storage	Yes
368	Manitoba Maple	<i>Acer negundo</i>	Invasive	11.0	Fair	Remove	Proposed Outdoor Storage	Yes
370	White Ash	<i>Fraxinus americana</i>	Native	15.8	Very Poor	Remove	Condition	No
371	Manitoba Maple	<i>Acer negundo</i>	Invasive	25.5	Fair	Remove	Proposed Outdoor Storage	Yes
372	White Ash	<i>Fraxinus americana</i>	Native	29.3	Very Poor	Remove	Proposed Outdoor Storage	No
374	Manitoba Maple	<i>Acer negundo</i>	Invasive	18.5	Fair	Remove	Proposed Outdoor Storage	Yes
375	Manitoba Maple	<i>Acer negundo</i>	Invasive	19.8	Fair	Remove	Proposed Outdoor Storage	Yes
376	Manitoba Maple	<i>Acer negundo</i>	Invasive	16.2	Fair	Remove	Proposed Outdoor Storage	Yes
378	White Ash	<i>Fraxinus americana</i>	Native	39.3, 28.1	Very Poor	Remove	Condition	No
379	Manitoba Maple	<i>Acer negundo</i>	Invasive	15.5	Fair	Remove	Proposed Outdoor Storage	Yes
380	Manitoba Maple	<i>Acer negundo</i>	Invasive	10.8	Poor	Remove	Proposed Outdoor Storage	No
381	Green Ash	<i>Fraxinus pennsylvanica</i>	Native	14.5, 11.7	Dead	Remove	Condition	No
382	Manitoba Maple	<i>Acer negundo</i>	Invasive	15.2	Fair	Remove	Proposed Outdoor Storage	Yes
383	Manitoba Maple	<i>Acer negundo</i>	Invasive	21.0	Very Poor	Remove	Proposed Outdoor Storage	No
384	White Ash	<i>Fraxinus americana</i>	Native	11.5	Very Poor	Remove	Proposed Outdoor Storage	No
385	Manitoba Maple	<i>Acer negundo</i>	Invasive	13.0	Fair	Remove	Proposed Outdoor Storage	Yes
386	Green Ash	<i>Fraxinus pennsylvanica</i>	Native	11.5	Very Poor	Remove	Proposed Outdoor Storage	No
387	Green Ash	<i>Fraxinus pennsylvanica</i>	Native	13.2	Dead	Remove	Proposed Outdoor Storage	No
388	Manitoba Maple	<i>Acer negundo</i>	Invasive	12.0	Poor	Remove	Proposed Outdoor Storage	No
389	Green Ash	<i>Fraxinus pennsylvanica</i>	Native	13.5	Very Poor	Remove	Proposed Outdoor Storage	No
390	Green Ash	<i>Fraxinus pennsylvanica</i>	Native	14.2	Poor	Remove	Proposed Outdoor Storage	No
391	Green Ash	<i>Fraxinus pennsylvanica</i>	Native	13.9	Very Poor	Remove	Proposed Outdoor Storage	No
392	Manitoba Maple	<i>Acer negundo</i>	Invasive	11.0	Fair	Remove	Proposed Outdoor Storage	Yes
393	Manitoba Maple	<i>Acer negundo</i>	Invasive	12.2	Fair	Remove	Proposed Outdoor Storage	Yes
394	Manitoba Maple	<i>Acer negundo</i>	Invasive	10.7	Poor	Remove	Proposed Outdoor Storage	No
395	Manitoba Maple	<i>Acer negundo</i>	Invasive	17.0	Fair	Remove	Proposed Outdoor Storage	Yes
396	White Ash	<i>Fraxinus americana</i>	Native	11.3	Dead	Remove	Proposed Outdoor Storage	No
397	Manitoba Maple	<i>Acer negundo</i>	Invasive	11.4	Poor	Remove	Proposed Outdoor Storage	No

Tree Number	Common Name	Scientific Name	Native / Non-native	DBH (cm)	Overall Condition	Proposed Action	Rationale for Removal	Compensation Required
398	White Ash	<i>Fraxinus americana</i>	Native	11.8	Very Poor	Remove	Proposed Outdoor Storage	No
399	Manitoba Maple	<i>Acer negundo</i>	Invasive	19.5	Fair	Remove	Proposed Outdoor Storage	Yes
400	Manitoba Maple	<i>Acer negundo</i>	Invasive	22.9	Fair	Remove	Proposed Outdoor Storage	Yes
401	Manitoba Maple	<i>Acer negundo</i>	Invasive	11.3	Poor	Remove	Proposed Outdoor Storage	No
402	White Ash	<i>Fraxinus americana</i>	Native	12.8	Very Poor	Remove	Proposed Outdoor Storage	No
403	Manitoba Maple	<i>Acer negundo</i>	Invasive	10.8	Fair	Remove	Proposed Outdoor Storage	Yes
404	Manitoba Maple	<i>Acer negundo</i>	Invasive	11.4	Poor	Remove	Proposed Outdoor Storage	No
405	Manitoba Maple	<i>Acer negundo</i>	Invasive	11.8	Poor	Remove	Proposed Outdoor Storage	No
406	Manitoba Maple	<i>Acer negundo</i>	Invasive	12.6, 10.3	Fair	Remove	Proposed Outdoor Storage	Yes
407	Manitoba Maple	<i>Acer negundo</i>	Invasive	15.2, 18.9	Fair	Remove	Proposed Outdoor Storage	Yes
408	Manitoba Maple	<i>Acer negundo</i>	Invasive	14.9	Fair	Remove	Proposed Outdoor Storage	Yes
409	Manitoba Maple	<i>Acer negundo</i>	Invasive	24.6	Fair	Remove	Proposed Outdoor Storage	Yes
410	Manitoba Maple	<i>Acer negundo</i>	Invasive	14.7	Fair	Remove	Proposed Outdoor Storage	Yes
411	Manitoba Maple	<i>Acer negundo</i>	Invasive	12.6	Poor	Remove	Proposed Outdoor Storage	No
412	Green Ash	<i>Fraxinus pennsylvanica</i>	Native	18.9, 17.9	Poor	Remove	Proposed Outdoor Storage	No
413	Manitoba Maple	<i>Acer negundo</i>	Invasive	15.5, 12.4	Fair	Remove	Proposed Outdoor Storage	Yes
413	Silver Maple	<i>Acer saccharinum</i>	Native	10.6, 9.0, 7.5	Fair	Remove	Proposed Outdoor Storage	Yes
414	Manitoba Maple	<i>Acer negundo</i>	Invasive	28.4, 27.1, 19.4	Fair	Remove	Proposed Outdoor Storage	Yes
415	Manitoba Maple	<i>Acer negundo</i>	Invasive	26.2, 15.8	Fair	Remove	Proposed Outdoor Storage	Yes
416	Manitoba Maple	<i>Acer negundo</i>	Invasive	17.2, 16.1	Fair	Remove	Proposed Outdoor Storage	Yes
417	Manitoba Maple	<i>Acer negundo</i>	Invasive	17.8, 17.4	Fair	Remove	Proposed Outdoor Storage	Yes
418	Manitoba Maple	<i>Acer negundo</i>	Invasive	38.8	Poor	Remove	Proposed Outdoor Storage	No
419	Manitoba Maple	<i>Acer negundo</i>	Invasive	14.0	Poor	Remove	Proposed Outdoor Storage	No
420	Manitoba Maple	<i>Acer negundo</i>	Invasive	10.9	Poor	Remove	Proposed Outdoor Storage	No
421	Manitoba Maple	<i>Acer negundo</i>	Invasive	14.6	Fair	Remove	Proposed Outdoor Storage	Yes
422	Manitoba Maple	<i>Acer negundo</i>	Invasive	17.8	Fair	Remove	Proposed Outdoor Storage	Yes
423	Manitoba Maple	<i>Acer negundo</i>	Invasive	18.9	Fair	Remove	Proposed Outdoor Storage	Yes
424	Manitoba Maple	<i>Acer negundo</i>	Invasive	11.9, 11.7	Poor	Remove	Proposed Outdoor Storage	No
425	Manitoba Maple	<i>Acer negundo</i>	Invasive	17.1	Fair	Remove	Proposed Outdoor Storage	Yes
431	Manitoba Maple	<i>Acer negundo</i>	Invasive	26.3, 25.4	Fair	Remove	Swale	Yes
432	Manitoba Maple	<i>Acer negundo</i>	Invasive	25.4, 21.2, 13.0	Good	Remove	Swale	Yes
433	Manitoba Maple	<i>Acer negundo</i>	Invasive	13.1, 9.0	Fair	Remove	Proposed Outdoor Storage	Yes
434	Manitoba Maple	<i>Acer negundo</i>	Invasive	10.4, 10.3	Fair	Remove	Proposed Outdoor Storage	Yes
435	White Ash	<i>Fraxinus americana</i>	Native	20.3, 17.0	Very Poor	Remove	Proposed Outdoor Storage	No
436	Manitoba Maple	<i>Acer negundo</i>	Invasive	20.4	Fair	Remove	Proposed Outdoor Storage	Yes

Tree Number	Common Name	Scientific Name	Native / Non-native	DBH (cm)	Overall Condition	Proposed Action	Rationale for Removal	Compensation Required
437	Silver Maple	<i>Acer saccharinum</i>	Native	17.2, 15.5, 12.7, 12.7, 11.6	Good	Remove	Proposed Outdoor Storage	Yes
438	Manitoba Maple	<i>Acer negundo</i>	Invasive	16.0, 14.2, 9.0	Fair	Remove	Proposed Outdoor Storage	Yes
439	White Ash	<i>Fraxinus americana</i>	Native	21.5	Dead	Remove	Proposed Outdoor Storage	No
440	Green Ash	<i>Fraxinus pennsylvanica</i>	Native	17.6	Dead	Remove	Proposed Outdoor Storage	No
441	Manitoba Maple	<i>Acer negundo</i>	Invasive	22.2, 17.1	Fair	Remove	Proposed Outdoor Storage	Yes
442	Manitoba Maple	<i>Acer negundo</i>	Invasive	13.4	Fair	Remove	Proposed Outdoor Storage	Yes
443	Manitoba Maple	<i>Acer negundo</i>	Invasive	10.2	Poor	Remove	Proposed Outdoor Storage	No
444	Green Ash	<i>Fraxinus pennsylvanica</i>	Native	11.9	Poor	Remove	Proposed Outdoor Storage	No
445	Manitoba Maple	<i>Acer negundo</i>	Invasive	19.2	Fair	Remove	Proposed Outdoor Storage	Yes
446	Manitoba Maple	<i>Acer negundo</i>	Invasive	17.9	Fair	Remove	Proposed Outdoor Storage	Yes
447	Manitoba Maple	<i>Acer negundo</i>	Invasive	10.8, 9.8	Poor	Remove	Proposed Outdoor Storage	No
448	Manitoba Maple	<i>Acer negundo</i>	Invasive	15.7	Fair	Remove	Proposed Outdoor Storage	Yes
449	Manitoba Maple	<i>Acer negundo</i>	Invasive	12.5	Poor	Remove	Proposed Outdoor Storage	No
450	Green Ash	<i>Fraxinus pennsylvanica</i>	Native	16.4	Very Poor	Remove	Proposed Outdoor Storage	No
451	Green Ash	<i>Fraxinus pennsylvanica</i>	Native	13.3	Very Poor	Remove	Proposed Outdoor Storage	No
452	Green Ash	<i>Fraxinus pennsylvanica</i>	Native	10.3	Dead	Remove	Proposed Outdoor Storage	No
453	Green Ash	<i>Fraxinus pennsylvanica</i>	Native	10.2	Poor	Remove	Proposed Outdoor Storage	No
454	Green Ash	<i>Fraxinus pennsylvanica</i>	Native	11.0	Dead	Remove	Proposed Outdoor Storage	No
455	Green Ash	<i>Fraxinus pennsylvanica</i>	Native	12.9	Poor	Remove	Proposed Outdoor Storage	No
456	Green Ash	<i>Fraxinus pennsylvanica</i>	Native	11.5	Poor	Remove	Proposed Outdoor Storage	No
457	Manitoba Maple	<i>Acer negundo</i>	Invasive	12.3	Fair	Remove	Proposed Outdoor Storage	Yes
458	Manitoba Maple	<i>Acer negundo</i>	Invasive	14.3	Fair	Remove	Proposed Outdoor Storage	Yes
459	Green Ash	<i>Fraxinus pennsylvanica</i>	Native	11.4	Poor	Remove	Proposed Outdoor Storage	No
460	Manitoba Maple	<i>Acer negundo</i>	Invasive	10.5	Poor	Remove	Proposed Outdoor Storage	No
461	Green Ash	<i>Fraxinus pennsylvanica</i>	Native	10.1	Poor	Remove	Proposed Outdoor Storage	No
462	Green Ash	<i>Fraxinus pennsylvanica</i>	Native	10.2	Very Poor	Remove	Proposed Outdoor Storage	No
463	Green Ash	<i>Fraxinus pennsylvanica</i>	Native	10.1	Very Poor	Remove	Proposed Outdoor Storage	No
464	Green Ash	<i>Fraxinus pennsylvanica</i>	Native	10.4	Very Poor	Remove	Proposed Outdoor Storage	No
465	Green Ash	<i>Fraxinus pennsylvanica</i>	Native	15.1	Very Poor	Remove	Proposed Outdoor Storage	No
466	Green Ash	<i>Fraxinus pennsylvanica</i>	Native	13.7	Very Poor	Remove	Proposed Outdoor Storage	No
467	Green Ash	<i>Fraxinus pennsylvanica</i>	Native	13.2	Poor	Remove	Proposed Outdoor Storage	No
468	Green Ash	<i>Fraxinus pennsylvanica</i>	Native	11.9	Very Poor	Remove	Proposed Outdoor Storage	No
469	Green Ash	<i>Fraxinus pennsylvanica</i>	Native	12.2	Poor	Remove	Proposed Outdoor Storage	No
470	Green Ash	<i>Fraxinus pennsylvanica</i>	Native	13.5	Very Poor	Remove	Proposed Outdoor Storage	No
471	Green Ash	<i>Fraxinus pennsylvanica</i>	Native	12.1	Poor	Remove	Proposed Outdoor Storage	No
472	Green Ash	<i>Fraxinus pennsylvanica</i>	Native	18.6	Very Poor	Remove	Proposed Outdoor Storage	No
473	Green Ash	<i>Fraxinus pennsylvanica</i>	Native	11.3	Very Poor	Remove	Proposed Outdoor Storage	No
474	Green Ash	<i>Fraxinus pennsylvanica</i>	Native	10.5	Poor	Remove	Proposed Outdoor Storage	No
475	Green Ash	<i>Fraxinus pennsylvanica</i>	Native	10.2	Very Poor	Remove	Proposed Outdoor Storage	No
476	Green Ash	<i>Fraxinus pennsylvanica</i>	Native	11.4	Very Poor	Remove	Proposed Outdoor Storage	No

Tree Number	Common Name	Scientific Name	Native / Non-native	DBH (cm)	Overall Condition	Proposed Action	Rationale for Removal	Compensation Required
477	Green Ash	<i>Fraxinus pennsylvanica</i>	Native	10.2	Very Poor	Remove	Proposed Outdoor Storage	No
478	Green Ash	<i>Fraxinus pennsylvanica</i>	Native	10.7	Very Poor	Remove	Proposed Outdoor Storage	No
479	Green Ash	<i>Fraxinus pennsylvanica</i>	Native	11.9	Poor	Remove	Proposed Outdoor Storage	No
480	Green Ash	<i>Fraxinus pennsylvanica</i>	Native	10.8	Very Poor	Remove	Proposed Outdoor Storage	No
481	Green Ash	<i>Fraxinus pennsylvanica</i>	Native	13.0	Very Poor	Remove	Proposed Outdoor Storage	No
482	Green Ash	<i>Fraxinus pennsylvanica</i>	Native	13.8	Poor	Remove	Proposed Outdoor Storage	No
483	Green Ash	<i>Fraxinus pennsylvanica</i>	Native	10.3	Very Poor	Remove	Proposed Outdoor Storage	No
484	Green Ash	<i>Fraxinus pennsylvanica</i>	Native	13.3	Poor	Remove	Proposed Outdoor Storage	No
485	Green Ash	<i>Fraxinus pennsylvanica</i>	Native	10.8	Very Poor	Remove	Proposed Outdoor Storage	No
486	Green Ash	<i>Fraxinus pennsylvanica</i>	Native	11.6	Very Poor	Remove	Proposed Outdoor Storage	No
487	Green Ash	<i>Fraxinus pennsylvanica</i>	Native	11.7	Very Poor	Remove	Proposed Outdoor Storage	No
488	Green Ash	<i>Fraxinus pennsylvanica</i>	Native	11.8	Very Poor	Remove	Proposed Outdoor Storage	No
489	Green Ash	<i>Fraxinus pennsylvanica</i>	Native	10.4	Very Poor	Remove	Proposed Outdoor Storage	No
490	Green Ash	<i>Fraxinus pennsylvanica</i>	Native	10.7	Very Poor	Remove	Proposed Outdoor Storage	No
491	Green Ash	<i>Fraxinus pennsylvanica</i>	Native	10.2	Very Poor	Remove	Proposed Outdoor Storage	No
492	Green Ash	<i>Fraxinus pennsylvanica</i>	Native	11.5	Poor	Remove	Proposed Outdoor Storage	No
493	Green Ash	<i>Fraxinus pennsylvanica</i>	Native	12.7	Very Poor	Remove	Proposed Outdoor Storage	No
494	Green Ash	<i>Fraxinus pennsylvanica</i>	Native	11.8	Poor	Remove	Proposed Outdoor Storage	No
495	Green Ash	<i>Fraxinus pennsylvanica</i>	Native	10.7	Poor	Remove	Proposed Outdoor Storage	No
496	Green Ash	<i>Fraxinus pennsylvanica</i>	Native	14.9	Poor	Remove	Proposed Outdoor Storage	No
497	Green Ash	<i>Fraxinus pennsylvanica</i>	Native	10.3	Dead	Remove	Proposed Outdoor Storage	No
498	Green Ash	<i>Fraxinus pennsylvanica</i>	Native	13.0	Poor	Remove	Proposed Outdoor Storage	No
499	Green Ash	<i>Fraxinus pennsylvanica</i>	Native	10.6	Very Poor	Remove	Proposed Outdoor Storage	No
500	Green Ash	<i>Fraxinus pennsylvanica</i>	Native	16.1	Poor	Remove	Proposed Outdoor Storage	No
901	Manitoba Maple	<i>Acer negundo</i>	Invasive	18.0	Poor	Remove	Condition	No
903	Manitoba Maple	<i>Acer negundo</i>	Invasive	25.0	Fair	Remove	Proposed Outdoor Storage	Yes
907	Manitoba Maple	<i>Acer negundo</i>	Invasive	33.0	Fair	Remove	Proposed Outdoor Storage	Yes
908	Manitoba Maple	<i>Acer negundo</i>	Invasive	14.4	Fair	Remove	Proposed Outdoor Storage	Yes
909	Manitoba Maple	<i>Acer negundo</i>	Invasive	24.0, 13.9	Fair	Remove	Proposed Outdoor Storage	Yes
910	Manitoba Maple	<i>Acer negundo</i>	Invasive	24.7+18.3	Fair	Remove	Proposed Outdoor Storage	Yes
911	Manitoba Maple	<i>Acer negundo</i>	Invasive	24.5, 22.3, 18.7, 18.9	Fair	Remove	Proposed Outdoor Storage	Yes
912	Manitoba Maple	<i>Acer negundo</i>	Invasive	20.0, 17.0, 15.3	Fair	Remove	Proposed Outdoor Storage	Yes
926	Manitoba Maple	<i>Acer negundo</i>	Invasive	18.3, 18.9	Poor	Remove	Proposed Outdoor Storage	No
927	Manitoba Maple	<i>Acer negundo</i>	Invasive	20.0, 12.1	Fair	Remove	Proposed Outdoor Storage	Yes
928	Manitoba Maple	<i>Acer negundo</i>	Invasive	15.0	Fair	Remove	Proposed Outdoor Storage	Yes
929	Manitoba Maple	<i>Acer negundo</i>	Invasive	15.0	Poor	Remove	Proposed Outdoor Storage	No



Tree Number	Common Name	Scientific Name	Native / Non-native	DBH (cm)	Overall Condition	Proposed Action	Rationale for Removal	Compensation Required
933	Manitoba Maple	<i>Acer negundo</i>	Invasive	28.5	Fair	Remove	Proposed Outdoor Storage	Yes
935	Manitoba Maple	<i>Acer negundo</i>	Invasive	15.0	Fair	Remove	Proposed Outdoor Storage	Yes
936	Manitoba Maple	<i>Acer negundo</i>	Invasive	20.6	Fair	Remove	Proposed Outdoor Storage	Yes
937	Manitoba Maple	<i>Acer negundo</i>	Invasive	12.2	Poor	Remove	Proposed Outdoor Storage	No
938	Manitoba Maple	<i>Acer negundo</i>	Invasive	11.0	Very Poor	Remove	Proposed Outdoor Storage	No
939	Manitoba Maple	<i>Acer negundo</i>	Invasive	23.0	Fair	Remove	Proposed Outdoor Storage	Yes
945	Manitoba Maple	<i>Acer negundo</i>	Invasive	31.9, 28.6	Fair	Remove	Proposed Outdoor Storage	Yes
1037	Green Ash	<i>Fraxinus pennsylvanica</i>	Native	13.9	Very Poor	Remove	Proposed Outdoor Storage	No
1038	Green Ash	<i>Fraxinus pennsylvanica</i>	Native	10.6	Very Poor	Remove	Proposed Outdoor Storage	No
1039	Green Ash	<i>Fraxinus pennsylvanica</i>	Native	11.9	Very Poor	Remove	Proposed Outdoor Storage	No
1040	Manitoba Maple	<i>Acer negundo</i>	Invasive	11.5	Fair	Remove	Proposed Outdoor Storage	Yes
1041	Manitoba Maple	<i>Acer negundo</i>	Invasive	12.4	Fair	Remove	Proposed Outdoor Storage	Yes
1042	Manitoba Maple	<i>Acer negundo</i>	Invasive	11.7	Fair	Remove	Proposed Outdoor Storage	Yes
1043	Manitoba Maple	<i>Acer negundo</i>	Invasive	11.7	Fair	Remove	Proposed Outdoor Storage	Yes
1044	Manitoba Maple	<i>Acer negundo</i>	Invasive	10.8	Fair	Remove	Proposed Outdoor Storage	Yes
1045	Manitoba Maple	<i>Acer negundo</i>	Invasive	12.5	Fair	Remove	Proposed Outdoor Storage	Yes
1046	Manitoba Maple	<i>Acer negundo</i>	Invasive	20.7	Good	Remove	Proposed Outdoor Storage	Yes
1047	Green Ash	<i>Fraxinus pennsylvanica</i>	Native	11.8	Poor	Remove	Proposed Outdoor Storage	No
1048	Manitoba Maple	<i>Acer negundo</i>	Invasive	10.0	Fair	Remove	Proposed Outdoor Storage	Yes
1049	Manitoba Maple	<i>Acer negundo</i>	Invasive	16.7	Fair	Remove	Proposed Outdoor Storage	Yes
1050	Manitoba Maple	<i>Acer negundo</i>	Invasive	10.6	Fair	Remove	Proposed Outdoor Storage	Yes
1051	Manitoba Maple	<i>Acer negundo</i>	Invasive	10.8	Fair	Remove	Proposed Outdoor Storage	Yes
1052	Manitoba Maple	<i>Acer negundo</i>	Invasive	15.0	Good	Remove	Proposed Outdoor Storage	Yes
1053	Manitoba Maple	<i>Acer negundo</i>	Invasive	11.2	Fair	Remove	Proposed Outdoor Storage	Yes
1054	Manitoba Maple	<i>Acer negundo</i>	Invasive	10.8, 9.7	Fair	Remove	Proposed Outdoor Storage	Yes
1055	Green Ash	<i>Fraxinus pennsylvanica</i>	Native	11.8	Poor	Remove	Proposed Outdoor Storage	No
1056	Green Ash	<i>Fraxinus pennsylvanica</i>	Native	13.2	Poor	Remove	Proposed Outdoor Storage	No
1057	Manitoba Maple	<i>Acer negundo</i>	Invasive	13.4	Fair	Remove	Proposed Outdoor Storage	Yes
1058	Green Ash	<i>Fraxinus pennsylvanica</i>	Native	19.2	Poor	Remove	Proposed Outdoor Storage	No
1059	Manitoba Maple	<i>Acer negundo</i>	Invasive	12.5	Fair	Remove	Proposed Outdoor Storage	Yes
1060	Green Ash	<i>Fraxinus pennsylvanica</i>	Native	10.0	Very Poor	Remove	Proposed Outdoor Storage	No
1061	Green Ash	<i>Fraxinus pennsylvanica</i>	Native	11.5	Very Poor	Remove	Proposed Outdoor Storage	No
1062	Green Ash	<i>Fraxinus pennsylvanica</i>	Native	10.5	Very Poor	Remove	Proposed Outdoor Storage	No
1068	Green Ash	<i>Fraxinus pennsylvanica</i>	Native	30, 22, 22, 21	Very Poor	Remove	Condition	No

Tree Number	Common Name	Scientific Name	Native / Non-native	DBH (cm)	Overall Condition	Proposed Action	Rationale for Removal	Compensation Required
1069	Manitoba Maple	<i>Acer negundo</i>	Invasive	22.3	Fair	Remove	Proposed Outdoor Storage	Yes
1070	Manitoba Maple	<i>Acer negundo</i>	Invasive	20.0, 13.5, 13.3	Fair	Remove	Proposed Outdoor Storage	Yes
1071	Green Ash	<i>Fraxinus pennsylvanica</i>	Native	11.9	Poor	Remove	Proposed Outdoor Storage	No
1072	Green Ash	<i>Fraxinus pennsylvanica</i>	Native	10.3	Poor	Remove	Proposed Outdoor Storage	No
1073	Green Ash	<i>Fraxinus pennsylvanica</i>	Native	12.1	Very Poor	Remove	Proposed Outdoor Storage	No
1074	Manitoba Maple	<i>Acer negundo</i>	Invasive	17.0, 10.6	Fair	Remove	Proposed Outdoor Storage	Yes
1075	Green Ash	<i>Fraxinus pennsylvanica</i>	Native	35.3, 34.0, 34, 32, 27, 23	Dead	Remove	Condition	No
1076	Manitoba Maple	<i>Acer negundo</i>	Invasive	33.4, 33.0	Fair	Remove	Proposed Outdoor Storage	Yes
1077	Manitoba Maple	<i>Acer negundo</i>	Invasive	25, 22, 21, 21, 14	Fair	Remove	Proposed Outdoor Storage	Yes
1156	Manitoba Maple	<i>Acer negundo</i>	Invasive	27.5	Fair	Remove	Proposed Outdoor Storage	Yes
1157	Manitoba Maple	<i>Acer negundo</i>	Invasive	22.7	Fair	Remove	Proposed Outdoor Storage	Yes
1158	Manitoba Maple	<i>Acer negundo</i>	Invasive	15.0	Poor	Remove	Proposed Outdoor Storage	No
1159	Manitoba Maple	<i>Acer negundo</i>	Invasive	13.7	Poor	Remove	Proposed Outdoor Storage	No
1160	Manitoba Maple	<i>Acer negundo</i>	Invasive	26.4	Poor	Remove	Proposed Outdoor Storage	No
1161	Manitoba Maple	<i>Acer negundo</i>	Invasive	16.0	Poor	Remove	Proposed Outdoor Storage	No
1162	Manitoba Maple	<i>Acer negundo</i>	Invasive	21.4	Poor	Remove	Proposed Outdoor Storage	No
1163	Manitoba Maple	<i>Acer negundo</i>	Invasive	10.1	Poor	Remove	Proposed Outdoor Storage	No
1164	Manitoba Maple	<i>Acer negundo</i>	Invasive	18.0	Poor	Remove	Proposed Outdoor Storage	No
1165	Manitoba Maple	<i>Acer negundo</i>	Invasive	24.6, 15.5	Fair	Remove	Proposed Outdoor Storage	Yes
1166	Manitoba Maple	<i>Acer negundo</i>	Invasive	13.0	Poor	Remove	Proposed Outdoor Storage	No
1167	Manitoba Maple	<i>Acer negundo</i>	Invasive	14.4	Poor	Remove	Proposed Outdoor Storage	No
1168	Manitoba Maple	<i>Acer negundo</i>	Invasive	20.0	Very Poor	Remove	Proposed Outdoor Storage	No
1169	Manitoba Maple	<i>Acer negundo</i>	Invasive	21.6	Very Poor	Remove	Proposed Outdoor Storage	No
1170	Manitoba Maple	<i>Acer negundo</i>	Invasive	12.0	Very Poor	Remove	Proposed Outdoor Storage	No
1171	Manitoba Maple	<i>Acer negundo</i>	Invasive	32.6	Fair	Remove	Proposed Outdoor Storage	Yes
1172	Manitoba Maple	<i>Acer negundo</i>	Invasive	18.3	Fair	Remove	Proposed Outdoor Storage	Yes
1173	Manitoba Maple	<i>Acer negundo</i>	Invasive	30.4, 19.7	Fair	Remove	Proposed Outdoor Storage	Yes
1174	Manitoba Maple	<i>Acer negundo</i>	Invasive	41.0	Fair	Remove	Proposed Outdoor Storage	Yes
1175	Manitoba Maple	<i>Acer negundo</i>	Invasive	20.5	Fair	Remove	Proposed Outdoor Storage	Yes
1176	Manitoba Maple	<i>Acer negundo</i>	Invasive	19.8	Poor	Remove	Proposed Outdoor Storage	No
1177	Manitoba Maple	<i>Acer negundo</i>	Invasive	24.5	Fair	Remove	Proposed Outdoor Storage	Yes
1178	Manitoba Maple	<i>Acer negundo</i>	Invasive	34, 30	Fair	Remove	Proposed Outdoor Storage	Yes
1179	Manitoba Maple	<i>Acer negundo</i>	Invasive	34.9	Fair	Remove	Proposed Outdoor Storage	Yes
1180	Manitoba Maple	<i>Acer negundo</i>	Invasive	18.6	Fair	Remove	Proposed Outdoor Storage	Yes
1181	Manitoba Maple	<i>Acer negundo</i>	Invasive	22.2	Fair	Remove	Proposed Outdoor Storage	Yes
1182	Manitoba Maple	<i>Acer negundo</i>	Invasive	35.1	Fair	Remove	Proposed Outdoor Storage	Yes
1183	Manitoba Maple	<i>Acer negundo</i>	Invasive	20.8, 18.2	Poor	Remove	Proposed Outdoor Storage	No
1184	Manitoba Maple	<i>Acer negundo</i>	Invasive	24.3	Fair	Remove	Proposed Outdoor Storage	Yes

Tree Number	Common Name	Scientific Name	Native / Non-native	DBH (cm)	Overall Condition	Proposed Action	Rationale for Removal	Compensation Required
1185	Manitoba Maple	<i>Acer negundo</i>	Invasive	20.0	Very Poor	Remove	Proposed Outdoor Storage	No
1186	Manitoba Maple	<i>Acer negundo</i>	Invasive	17.9, 14.7	Fair	Remove	Proposed Outdoor Storage	Yes
1187	Manitoba Maple	<i>Acer negundo</i>	Invasive	26.9	Very Poor	Remove	Proposed Outdoor Storage	No
1188	Manitoba Maple	<i>Acer negundo</i>	Invasive	21.5	Poor	Remove	Proposed Outdoor Storage	No
1189	Black Walnut	<i>Juglans nigra</i>	Native	11.0	Good	Remove	Proposed Outdoor Storage	Yes
1190	Manitoba Maple	<i>Acer negundo</i>	Invasive	23.8	Fair	Remove	Proposed Outdoor Storage	Yes
1191	Manitoba Maple	<i>Acer negundo</i>	Invasive	16.2	Fair	Remove	Proposed Outdoor Storage	Yes
1192	Manitoba Maple	<i>Acer negundo</i>	Invasive	15.0	Poor	Remove	Proposed Outdoor Storage	No
1193	Manitoba Maple	<i>Acer negundo</i>	Invasive	23, 17	Poor	Remove	Proposed Outdoor Storage	No
1194	Manitoba Maple	<i>Acer negundo</i>	Invasive	25.2	Poor	Remove	Proposed Outdoor Storage	No
1195	Manitoba Maple	<i>Acer negundo</i>	Invasive	10.9	Poor	Remove	Proposed Outdoor Storage	No
1196	Manitoba Maple	<i>Acer negundo</i>	Invasive	14.7	Fair	Remove	Proposed Outdoor Storage	Yes
1197	Manitoba Maple	<i>Acer negundo</i>	Invasive	22.6	Fair	Remove	Proposed Outdoor Storage	Yes
1198	Manitoba Maple	<i>Acer negundo</i>	Invasive	15.4, 14.8	Fair	Remove	Proposed Outdoor Storage	Yes
1199	Manitoba Maple	<i>Acer negundo</i>	Invasive	35.8	Fair	Remove	Proposed Outdoor Storage	Yes
1200	Manitoba Maple	<i>Acer negundo</i>	Invasive	17.2	Fair	Remove	Proposed Outdoor Storage	Yes
1201	Manitoba Maple	<i>Acer negundo</i>	Invasive	12.2	Poor	Remove	Proposed Outdoor Storage	No
1202	Manitoba Maple	<i>Acer negundo</i>	Invasive	31.6	Fair	Remove	Proposed Outdoor Storage	Yes
1203	Manitoba Maple	<i>Acer negundo</i>	Invasive	24.6, 19.1, 10.4	Poor	Remove	Proposed Outdoor Storage	No
1204	Manitoba Maple	<i>Acer negundo</i>	Invasive	31.1	Poor	Remove	Proposed Outdoor Storage	No
1205	Manitoba Maple	<i>Acer negundo</i>	Invasive	12.4	Very Poor	Remove	Proposed Outdoor Storage	No
1206	Manitoba Maple	<i>Acer negundo</i>	Invasive	28.8	Fair	Remove	Proposed Outdoor Storage	Yes
1207	Manitoba Maple	<i>Acer negundo</i>	Invasive	13.0	Poor	Remove	Proposed Outdoor Storage	No
1208	Manitoba Maple	<i>Acer negundo</i>	Invasive	38.9, 28.1, 24.2	Fair	Remove	Proposed Outdoor Storage	Yes
1209	Manitoba Maple	<i>Acer negundo</i>	Invasive	23.6	Poor	Remove	Proposed Outdoor Storage	No
1210	Manitoba Maple	<i>Acer negundo</i>	Invasive	18.4	Poor	Remove	Proposed Outdoor Storage	No
1211	Manitoba Maple	<i>Acer negundo</i>	Invasive	38.2	Fair	Remove	Proposed Outdoor Storage	Yes
1212	Manitoba Maple	<i>Acer negundo</i>	Invasive	17.7	Fair	Remove	Proposed Outdoor Storage	Yes

Tree Number	Common Name	Scientific Name	Native / Non-native	DBH (cm)	Overall Condition	Proposed Action	Rationale for Removal	Compensation Required
1213	Manitoba Maple	<i>Acer negundo</i>	Invasive	28.2	Poor	Remove	Proposed Outdoor Storage	No
1214	Manitoba Maple	<i>Acer negundo</i>	Invasive	34.5, 26.6	Fair	Remove	Proposed Outdoor Storage	Yes
1215	Manitoba Maple	<i>Acer negundo</i>	Invasive	23.0, 16.1	Fair	Remove	Proposed Outdoor Storage	Yes
1238	Manitoba Maple	<i>Acer negundo</i>	Invasive	22.5, 13.6	Poor	Remove	Swale	No
1239	Manitoba Maple	<i>Acer negundo</i>	Invasive	20.8	Fair	Remove	Swale	Yes
1240	Manitoba Maple	<i>Acer negundo</i>	Invasive	28.3, 26.5	Fair	Remove	Swale	Yes
1241	Manitoba Maple	<i>Acer negundo</i>	Invasive	31.2, 29.0	Poor	Remove	Swale	No
1242	Manitoba Maple	<i>Acer negundo</i>	Invasive	22.8	Poor	Remove	Swale	No
1243	Manitoba Maple	<i>Acer negundo</i>	Invasive	15.5	Fair	Remove	Swale	Yes
1244	Manitoba Maple	<i>Acer negundo</i>	Invasive	31.2	Fair	Remove	Swale	Yes
1245	Black Walnut	<i>Juglans nigra</i>	Native	17.1	Fair	Remove	Proposed Outdoor Storage	Yes
1246	Manitoba Maple	<i>Acer negundo</i>	Invasive	63.7, 35.5, 30.1, 12.5	Fair	Remove	Proposed Outdoor Storage	Yes
1247	Manitoba Maple	<i>Acer negundo</i>	Invasive	14.7	Fair	Remove	Proposed Outdoor Storage	Yes
1248	Manitoba Maple	<i>Acer negundo</i>	Invasive	21.6, 20.2, 15.1	Fair	Remove	Proposed Outdoor Storage	Yes
1249	Manitoba Maple	<i>Acer negundo</i>	Invasive	25, 15	Very Poor	Remove	Proposed Outdoor Storage	No
1250	Manitoba Maple	<i>Acer negundo</i>	Invasive	22.9, 16.3	Fair	Remove	Proposed Outdoor Storage	Yes
1251	Manitoba Maple	<i>Acer negundo</i>	Invasive	42.9, 19.2, 15.5	Fair	Remove	Proposed Outdoor Storage	Yes
1252	Manitoba Maple	<i>Acer negundo</i>	Invasive	37.3	Fair	Remove	Proposed Outdoor Storage	Yes
1253	Manitoba Maple	<i>Acer negundo</i>	Invasive	33.2	Fair	Remove	Proposed Outdoor Storage	Yes
1254	Manitoba Maple	<i>Acer negundo</i>	Invasive	28.5, 22.7, 16.9	Fair	Remove	Proposed Outdoor Storage	Yes
1255	Manitoba Maple	<i>Acer negundo</i>	Invasive	11	Fair	Remove	Proposed Outdoor Storage	Yes
1256	Manitoba Maple	<i>Acer negundo</i>	Invasive	36.4, 23.2, 17.0	Poor	Remove	Proposed Outdoor Storage	No
1257	Manitoba Maple	<i>Acer negundo</i>	Invasive	16.8	Fair	Remove	Proposed Outdoor Storage	Yes
1258	Manitoba Maple	<i>Acer negundo</i>	Invasive	22.5, 17.8	Very Poor	Remove	Proposed Outdoor Storage	No
1259	Manitoba Maple	<i>Acer negundo</i>	Invasive	18.2	Fair	Remove	Proposed Outdoor Storage	Yes
1260	Manitoba Maple	<i>Acer negundo</i>	Invasive	17.2	Fair	Remove	Proposed Outdoor Storage	Yes

Tree Number	Common Name	Scientific Name	Native / Non-native	DBH (cm)	Overall Condition	Proposed Action	Rationale for Removal	Compensation Required
1261	Manitoba Maple	<i>Acer negundo</i>	Invasive	15.1	Good	Remove	Proposed Outdoor Storage	Yes
1262	Manitoba Maple	<i>Acer negundo</i>	Invasive	16.2	Fair	Remove	Proposed Outdoor Storage	Yes
1263	Manitoba Maple	<i>Acer negundo</i>	Invasive	17.8, 16.8	Fair	Remove	Proposed Outdoor Storage	Yes
1264	Manitoba Maple	<i>Acer negundo</i>	Invasive	30.9, 16.7	Fair	Remove	Proposed Outdoor Storage	Yes
1265	Manitoba Maple	<i>Acer negundo</i>	Invasive	14.3	Fair	Remove	Proposed Outdoor Storage	Yes
1266	Green Ash	<i>Fraxinus pennsylvanica</i>	Native	21.0	Dead	Remove	Proposed Outdoor Storage	No
1267	Manitoba Maple	<i>Acer negundo</i>	Invasive	12.5, 11.4	Fair	Remove	Proposed Outdoor Storage	Yes
1268	Manitoba Maple	<i>Acer negundo</i>	Invasive	19.9	Fair	Remove	Proposed Outdoor Storage	Yes
1269	Manitoba Maple	<i>Acer negundo</i>	Invasive	14.8, 11.2	Fair	Remove	Proposed Outdoor Storage	Yes
1270	Manitoba Maple	<i>Acer negundo</i>	Invasive	15.1	Fair	Remove	Proposed Outdoor Storage	Yes
1271	Manitoba Maple	<i>Acer negundo</i>	Invasive	15.1	Fair	Remove	Proposed Outdoor Storage	Yes
1272	Manitoba Maple	<i>Acer negundo</i>	Invasive	18.0	Fair	Remove	Proposed Outdoor Storage	Yes
1273	Manitoba Maple	<i>Acer negundo</i>	Invasive	16.9, 11.2, 11.0, 10.9	Fair	Remove	Proposed Outdoor Storage	Yes
1274	Manitoba Maple	<i>Acer negundo</i>	Invasive	39.0, 25.0	Poor	Remove	Proposed Outdoor Storage	No
1275	Manitoba Maple	<i>Acer negundo</i>	Invasive	27.8	Poor	Remove	Proposed Outdoor Storage	No
1276	Manitoba Maple	<i>Acer negundo</i>	Invasive	26.8, 12.1	Fair	Remove	Proposed Outdoor Storage	Yes
1277	Manitoba Maple	<i>Acer negundo</i>	Invasive	27.6, 18.0, 14	Fair	Remove	Proposed Outdoor Storage	Yes
1278	Manitoba Maple	<i>Acer negundo</i>	Invasive	17.7, 12.0, 11.5	Fair	Remove	Proposed Outdoor Storage	Yes
1279	Manitoba Maple	<i>Acer negundo</i>	Invasive	15.8, 11.4	Fair	Remove	Proposed Outdoor Storage	Yes
1280	Manitoba Maple	<i>Acer negundo</i>	Invasive	11.2	Fair	Remove	Proposed Outdoor Storage	Yes
1281	Manitoba Maple	<i>Acer negundo</i>	Invasive	16.0	Poor	Remove	Proposed Outdoor Storage	No
1282	Manitoba Maple	<i>Acer negundo</i>	Invasive	19.8	Fair	Remove	Proposed Outdoor Storage	Yes
1283	Manitoba Maple	<i>Acer negundo</i>	Invasive	22.4	Fair	Remove	Proposed Outdoor Storage	Yes
1284	Manitoba Maple	<i>Acer negundo</i>	Invasive	17.9	Fair	Remove	Proposed Outdoor Storage	Yes
1285	Manitoba Maple	<i>Acer negundo</i>	Invasive	16.0	Poor	Remove	Proposed Outdoor Storage	No
1286	Manitoba Maple	<i>Acer negundo</i>	Invasive	10.2	Poor	Remove	Proposed Outdoor Storage	No
1287	Manitoba Maple	<i>Acer negundo</i>	Invasive	15.1	Fair	Remove	Proposed Outdoor Storage	Yes
1288	Manitoba Maple	<i>Acer negundo</i>	Invasive	22.4	Fair	Remove	Proposed Outdoor Storage	Yes
1289	Manitoba Maple	<i>Acer negundo</i>	Invasive	21.6	Fair	Remove	Proposed Outdoor Storage	Yes
1290	Manitoba Maple	<i>Acer negundo</i>	Invasive	20.3, 18.6, 14.1	Fair	Remove	Proposed Outdoor Storage	Yes
1291	Manitoba Maple	<i>Acer negundo</i>	Invasive	22.3	Fair	Remove	Proposed Outdoor Storage	Yes
1292	Manitoba Maple	<i>Acer negundo</i>	Invasive	23.7	Poor	Remove	Proposed Outdoor Storage	No

Tree Number	Common Name	Scientific Name	Native / Non-native	DBH (cm)	Overall Condition	Proposed Action	Rationale for Removal	Compensation Required
1293	Manitoba Maple	<i>Acer negundo</i>	Invasive	15.2, 14.5, 13.5, 10.3	Fair	Remove	Proposed Outdoor Storage	Yes
1294	Manitoba Maple	<i>Acer negundo</i>	Invasive	19.4, 16.0	Poor	Remove	Proposed Outdoor Storage	No
1295	Manitoba Maple	<i>Acer negundo</i>	Invasive	29.9, 14.7	Fair	Remove	Proposed Outdoor Storage	Yes
1296	Manitoba Maple	<i>Acer negundo</i>	Invasive	10.8	Poor	Remove	Swale	No
1297	Manitoba Maple	<i>Acer negundo</i>	Invasive	24.5	Fair	Remove	Swale	Yes
1298	Manitoba Maple	<i>Acer negundo</i>	Invasive	22.7	Fair	Remove	Swale	Yes
1299	Manitoba Maple	<i>Acer negundo</i>	Invasive	15.7	Fair	Remove	Swale	Yes
1300	Manitoba Maple	<i>Acer negundo</i>	Invasive	19.7, 17.9, 15.4, 15.4	Fair	Remove	Swale	Yes
1304	Manitoba Maple	<i>Acer negundo</i>	Invasive	17.5	Poor	Remove	Condition	No
1321	Manitoba Maple	<i>Acer negundo</i>	Invasive	10.5, 10.3	Fair	Remove	Swale	Yes
1322	Manitoba Maple	<i>Acer negundo</i>	Invasive	31.3, 30.1	Fair	Remove	Swale	Yes
1323	Manitoba Maple	<i>Acer negundo</i>	Invasive	18.5	Fair	Remove	Swale	Yes
1324	Manitoba Maple	<i>Acer negundo</i>	Invasive	14.6	Fair	Remove	Swale	Yes
1325	Manitoba Maple	<i>Acer negundo</i>	Invasive	28.7, 18.0, 14.9	Fair	Remove	Proposed Outdoor Storage	Yes
1326	Manitoba Maple	<i>Acer negundo</i>	Invasive	11.0	Poor	Remove	Proposed Outdoor Storage	No
1327	Manitoba Maple	<i>Acer negundo</i>	Invasive	13.6	Poor	Remove	Proposed Outdoor Storage	No
1328	Manitoba Maple	<i>Acer negundo</i>	Invasive	10.6	Fair	Remove	Proposed Outdoor Storage	Yes
1329	Manitoba Maple	<i>Acer negundo</i>	Invasive	16.0, 10.9, 10.6	Fair	Remove	Proposed Outdoor Storage	Yes
1330	Manitoba Maple	<i>Acer negundo</i>	Invasive	19.2, 16.0, 14.1, 10.3	Poor	Remove	Proposed Outdoor Storage	No
1331	Manitoba Maple	<i>Acer negundo</i>	Invasive	22.8, 16.5, 10.3	Fair	Remove	Swale	Yes
1332	Manitoba Maple	<i>Acer negundo</i>	Invasive	19.8, 18.9	Fair	Remove	Swale	Yes
1333	Manitoba Maple	<i>Acer negundo</i>	Invasive	22.8	Poor	Remove	Swale	No
1334	Manitoba Maple	<i>Acer negundo</i>	Invasive	19.5, 19.3	Fair	Remove	Swale	Yes
1335	Manitoba Maple	<i>Acer negundo</i>	Invasive	16.0	Poor	Remove	Swale	No
1336	Manitoba Maple	<i>Acer negundo</i>	Invasive	18.2	Fair	Remove	Swale	Yes
1341	Manitoba Maple	<i>Acer negundo</i>	Invasive	43.4	Poor	Remove	Condition	No
1343	Norway Maple	<i>Acer platanoides</i>	Non-Native	69.2	Poor	Remove	Condition	No
1350	Manitoba Maple	<i>Acer negundo</i>	Invasive	10.9	Fair	Remove	Swale	Yes
1351	Manitoba Maple	<i>Acer negundo</i>	Invasive	19.2	Poor	Remove	Swale	No
1354	Manitoba Maple	<i>Acer negundo</i>	Invasive	13.3	Fair	Remove	Swale	Yes
1355	Manitoba Maple	<i>Acer negundo</i>	Invasive	15.2, 10.0	Fair	Remove	Swale	Yes



Tree Number	Common Name	Scientific Name	Native / Non-native	DBH (cm)	Overall Condition	Proposed Action	Rationale for Removal	Compensation Required
1356	Manitoba Maple	<i>Acer negundo</i>	Invasive	16.3, 10.2	Fair	Remove	Swale	Yes
1357	Manitoba Maple	<i>Acer negundo</i>	Invasive	26.7, 15.4	Fair	Remove	Swale	Yes
1358	Manitoba Maple	<i>Acer negundo</i>	Invasive	21.6, 21.2, 15.5	Fair	Remove	Swale	Yes
1361	Manitoba Maple	<i>Acer negundo</i>	Invasive	19.5, 11.4	Fair	Remove	Swale	Yes
1362	Manitoba Maple	<i>Acer negundo</i>	Invasive	27.8, 22.2, 19.3, 18.7, 15.0	Fair	Remove	Swale	Yes
1366	Manitoba Maple	<i>Acer negundo</i>	Invasive	15.4	Fair	Remove	Swale	Yes
1367	Manitoba Maple	<i>Acer negundo</i>	Invasive	15.2	Fair	Remove	Swale	Yes
1368	Manitoba Maple	<i>Acer negundo</i>	Invasive	22.8	Fair	Remove	Swale	Yes
1369	Manitoba Maple	<i>Acer negundo</i>	Invasive	23.9	Poor	Remove	Swale	No
1370	Manitoba Maple	<i>Acer negundo</i>	Invasive	12.9, 10.9	Fair	Remove	Swale	Yes
1371	Manitoba Maple	<i>Acer negundo</i>	Invasive	25.3, 18.3	Fair	Remove	Swale	Yes
1372	Manitoba Maple	<i>Acer negundo</i>	Invasive	12	Poor	Remove	Swale	No
1373	Manitoba Maple	<i>Acer negundo</i>	Invasive	18.7, 17.2, 10.7	Fair	Remove	Swale	Yes
1374	Manitoba Maple	<i>Acer negundo</i>	Invasive	18.0, 15.0	Fair	Remove	Swale	Yes
1376	Manitoba Maple	<i>Acer negundo</i>	Invasive	14.4	Poor	Remove	Swale	No
1377	Manitoba Maple	<i>Acer negundo</i>	Invasive	13.9	Fair	Remove	Swale	Yes
1378	Manitoba Maple	<i>Acer negundo</i>	Invasive	25.3, 18.6, 18.0	Poor	Remove	Swale	No
1379	Manitoba Maple	<i>Acer negundo</i>	Invasive	14.5, 10.5, 10.0	Fair	Remove	Swale	Yes
1380	Manitoba Maple	<i>Acer negundo</i>	Invasive	20.6, 20.0, 18.7, 15.7	Fair	Remove	Swale	Yes
1381	Manitoba Maple	<i>Acer negundo</i>	Invasive	37.5	Poor	Remove	Swale	No
1382	Manitoba Maple	<i>Acer negundo</i>	Invasive	36.5, 12.3	Fair	Remove	Swale	Yes
1383	Manitoba Maple	<i>Acer negundo</i>	Invasive	16.4, 14.9	Fair	Remove	Swale	Yes
1384	Manitoba Maple	<i>Acer negundo</i>	Invasive	27.5	Fair	Remove	Swale	Yes
1385	Manitoba Maple	<i>Acer negundo</i>	Invasive	33.5	Fair	Remove	Swale	Yes
1386	Manitoba Maple	<i>Acer negundo</i>	Invasive	24.0	Fair	Remove	Swale	Yes
1387	Manitoba Maple	<i>Acer negundo</i>	Invasive	17.2, 16.8, 11.0	Fair	Remove	Proposed Outdoor Storage	Yes
1391	Manitoba Maple	<i>Acer negundo</i>	Invasive	22.0, 16.6	Poor	Remove	Swale	No
1392	Manitoba Maple	<i>Acer negundo</i>	Invasive	11.2	Fair	Remove	Swale	Yes

Tree Number	Common Name	Scientific Name	Native / Non-native	DBH (cm)	Overall Condition	Proposed Action	Rationale for Removal	Compensation Required
1393	Manitoba Maple	<i>Acer negundo</i>	Invasive	42.6, 36.5	Fair	Remove	Swale	Yes
1394	Manitoba Maple	<i>Acer negundo</i>	Invasive	14.6	Very Poor	Remove	Swale	No
1395	Manitoba Maple	<i>Acer negundo</i>	Invasive	27.2, 22.0	Fair	Remove	Swale	Yes
1396	Manitoba Maple	<i>Acer negundo</i>	Invasive	25, 20	Very Poor	Remove	Swale	No
1397	Manitoba Maple	<i>Acer negundo</i>	Invasive	23.5, 16.5	Very Poor	Remove	Condition	No
1398	Manitoba Maple	<i>Acer negundo</i>	Invasive	20.6, 19.0	Poor	Remove	Condition	No
1487	Eastern Cottonwood	<i>Populus deltoides</i>	Native	70.4, 57.8	Poor	Remove	Condition	No
1488	Eastern Cottonwood	<i>Populus deltoides</i>	Native	37.1	Dead	Remove	Condition	No
1489	Eastern Cottonwood	<i>Populus deltoides</i>	Native	23.2	Very Poor	Remove	Condition	No
1490	Eastern Cottonwood	<i>Populus deltoides</i>	Native	28.9	Very Poor	Remove	Condition	No
1491	Manitoba Maple	<i>Acer negundo</i>	Invasive	23.4	Poor	Remove	Condition	No
1492	Eastern Cottonwood	<i>Populus deltoides</i>	Native	53.1, 38	Dead	Remove	Condition	No
1493	Eastern Cottonwood	<i>Populus deltoides</i>	Native	50	Dead	Remove	Condition	No
1494	Eastern Cottonwood	<i>Populus deltoides</i>	Native	35	Very Poor	Remove	Condition	No
1495	Eastern Cottonwood	<i>Populus deltoides</i>	Native	44	Dead	Remove	Condition	No
1496	Eastern Cottonwood	<i>Populus deltoides</i>	Native	48.5	Dead	Remove	Condition	No
1497	Eastern Cottonwood	<i>Populus deltoides</i>	Native	44	Very Poor	Remove	Condition	No
1498	Eastern Cottonwood	<i>Populus deltoides</i>	Native	34.0	Dead	Remove	Condition	No
1507	Eastern Cottonwood	<i>Populus deltoides</i>	Native	48.5, 34.4, 22.8	Dead	Remove	Condition	No
1508	Manitoba Maple	<i>Acer negundo</i>	Invasive	12.8	Poor	Remove	Condition	No
1509	Eastern Cottonwood	<i>Populus deltoides</i>	Native	50.1, 26.9	Very Poor	Remove	Condition	No
1511	Eastern Cottonwood	<i>Populus deltoides</i>	Native	62, 59, 49.1, 32.2	Very Poor	Remove	Condition	No
357	Manitoba Maple	<i>Acer negundo</i>	Invasive	42.6, 18	Fair	Retain		
358	Manitoba Maple	<i>Acer negundo</i>	Invasive	61.2	Fair	Retain		
369	Manitoba Maple	<i>Acer negundo</i>	Invasive	25.1	Fair	Retain		
373	White Ash	<i>Fraxinus americana</i>	Native	24.7	Very Poor	Retain		
377	White Ash	<i>Fraxinus americana</i>	Native	13.2	Very Poor	Retain		
426	Manitoba Maple	<i>Acer negundo</i>	Invasive	20.8, 20.7	Fair	Retain		
427	Manitoba Maple	<i>Acer negundo</i>	Invasive	11.7	Very Poor	Retain		
428	Manitoba Maple	<i>Acer negundo</i>	Invasive	17.7, 13.8, 12.9, 12.8	Fair	Retain		
429	Manitoba Maple	<i>Acer negundo</i>	Invasive	18.0	Fair	Retain		
430	Manitoba Maple	<i>Acer negundo</i>	Invasive	19.0, 14.7	Fair	Retain		
902	Manitoba Maple	<i>Acer negundo</i>	Invasive	45.8, 39.5	Good	Retain		
904	White Spruce	<i>Picea glauca</i>	Native	23.0	Good	Retain		

Tree Number	Common Name	Scientific Name	Native / Non-native	DBH (cm)	Overall Condition	Proposed Action	Rationale for Removal	Compensation Required
905	White Spruce	<i>Picea glauca</i>	Native	34.0	Good	Retain		
906	White Spruce	<i>Picea glauca</i>	Native	24.0	Good	Retain		
913	White Spruce	<i>Picea glauca</i>	Native	20.9	Fair	Retain		
914	White Spruce	<i>Picea glauca</i>	Native	34.0	Good	Retain		
915	White Spruce	<i>Picea glauca</i>	Native	29.7	Good	Retain		
916	Black Walnut	<i>Juglans nigra</i>	Native	23.3	Fair	Retain		
917	White Spruce	<i>Picea glauca</i>	Native	36.2	Fair	Retain		
918	Black Walnut	<i>Juglans nigra</i>	Native	19.9	Good	Retain		
919	White Spruce	<i>Picea glauca</i>	Native	21.6	Fair	Retain		
920	Manitoba Maple	<i>Acer negundo</i>	Invasive	19.1, 13.6, 10.6	Fair	Retain		
921	Sugar Maple	<i>Acer saccharum</i>		55.1	Fair	Retain		
922	White Spruce	<i>Picea glauca</i>	Native	25.1	Fair	Retain		
924	Manitoba Maple	<i>Acer negundo</i>	Invasive	30.0	Fair	Retain		
925	Manitoba Maple	<i>Acer negundo</i>	Invasive	15.4	Fair	Retain		
940	Manitoba Maple	<i>Acer negundo</i>	Invasive	12.5	Fair	Retain		
941	Manitoba Maple	<i>Acer negundo</i>	Invasive	19.2	Fair	Retain		
942	Manitoba Maple	<i>Acer negundo</i>	Invasive	16.6, 15.3	Poor	Retain		
943	Manitoba Maple	<i>Acer negundo</i>	Invasive	16.0	Poor	Retain		
944	Manitoba Maple	<i>Acer negundo</i>	Invasive	49.0	Fair	Retain		
946	White Spruce	<i>Picea glauca</i>	Native	15.1	Fair	Retain		
947	White Spruce	<i>Picea glauca</i>	Native	15.1	Fair	Retain		
948	Sugar Maple	<i>Acer saccharum</i>		28.0	Fair	Retain		
949	Manitoba Maple	<i>Acer negundo</i>	Invasive	22.5	Fair	Retain		
1063	Manitoba Maple	<i>Acer negundo</i>	Invasive	35.0	Very Poor	Retain		
1064	Manitoba Maple	<i>Acer negundo</i>	Invasive	63.0, 53.3, 42.8, 40.9	Fair	Retain		
1065	Manitoba Maple	<i>Acer negundo</i>	Invasive	34.8, 17.0	Poor	Retain		
1066	Manitoba Maple	<i>Acer negundo</i>	Invasive	42.2, 32.3	Fair	Retain		

Tree Number	Common Name	Scientific Name	Native / Non-native	DBH (cm)	Overall Condition	Proposed Action	Rationale for Removal	Compensation Required
1067	Manitoba Maple	<i>Acer negundo</i>	Invasive	22.4	Good	Retain		
1078	Manitoba Maple	<i>Acer negundo</i>	Invasive	21.0	Fair	Retain		
1079	Manitoba Maple	<i>Acer negundo</i>	Invasive	19, 12	Fair	Retain		
1080	Manitoba Maple	<i>Acer negundo</i>	Invasive	24.0	Fair	Retain		
1081	Manitoba Maple	<i>Acer negundo</i>	Invasive	11.5	Fair	Retain		
1082	Manitoba Maple	<i>Acer negundo</i>	Invasive	31.0, 25.9	Fair	Retain		
1083	Manitoba Maple	<i>Acer negundo</i>	Invasive	14.0	Dead	Retain		
1084	Manitoba Maple	<i>Acer negundo</i>	Invasive	15.0	Fair	Retain		
1085	Manitoba Maple	<i>Acer negundo</i>	Invasive	15.0	Poor	Retain		
1086	Manitoba Maple	<i>Acer negundo</i>	Invasive	10.2	Poor	Retain		
1087	Manitoba Maple	<i>Acer negundo</i>	Invasive	22, 16	Fair	Retain		
1088	Manitoba Maple	<i>Acer negundo</i>	Invasive	19.0	Fair	Retain		
1089	Manitoba Maple	<i>Acer negundo</i>	Invasive	14.5	Very Poor	Retain		
1090	Manitoba Maple	<i>Acer negundo</i>	Invasive	28.8	Fair	Retain		
1091	Manitoba Maple	<i>Acer negundo</i>	Invasive	22.0	Fair	Retain		
1092	Manitoba Maple	<i>Acer negundo</i>	Invasive	16.5	Poor	Retain		
1093	Manitoba Maple	<i>Acer negundo</i>	Invasive	20, 19	Dead	Retain		
1094	Manitoba Maple	<i>Acer negundo</i>	Invasive	21.2, 12.2	Fair	Retain		
1095	Manitoba Maple	<i>Acer negundo</i>	Invasive	16.0	Poor	Retain		
1096	Manitoba Maple	<i>Acer negundo</i>	Invasive	16.0	Poor	Retain		
1097	Manitoba Maple	<i>Acer negundo</i>	Invasive	22.8	Poor	Retain		
1098	Manitoba Maple	<i>Acer negundo</i>	Invasive	27.6	Poor	Retain		
1099	Manitoba Maple	<i>Acer negundo</i>	Invasive	24.0	Fair	Retain		
1100	Manitoba Maple	<i>Acer negundo</i>	Invasive	28.0, 16	Poor	Retain		
1101	Manitoba Maple	<i>Acer negundo</i>	Invasive	32.1	Poor	Retain		
1102	Manitoba Maple	<i>Acer negundo</i>	Invasive	20.6	Fair	Retain		
1103	Manitoba Maple	<i>Acer negundo</i>	Invasive	21.9	Fair	Retain		
1104	Manitoba Maple	<i>Acer negundo</i>	Invasive	18.0	Fair	Retain		
1105	Manitoba Maple	<i>Acer negundo</i>	Invasive	31.3	Fair	Retain		
1106	Manitoba Maple	<i>Acer negundo</i>	Invasive	21.3	Poor	Retain		
1107	Manitoba Maple	<i>Acer negundo</i>	Invasive	33.7	Fair	Retain		
1108	Manitoba Maple	<i>Acer negundo</i>	Invasive	25.9, 18.5	Fair	Retain		

Tree Number	Common Name	Scientific Name	Native / Non-native	DBH (cm)	Overall Condition	Proposed Action	Rationale for Removal	Compensation Required
1109	Manitoba Maple	<i>Acer negundo</i>	Invasive	34.6	Fair	Retain		
1109	Manitoba Maple	<i>Acer negundo</i>	Invasive	25.1	Fair	Retain		
1110	Manitoba Maple	<i>Acer negundo</i>	Invasive	29.9	Fair	Retain		
1111	Manitoba Maple	<i>Acer negundo</i>	Invasive	18.1	Fair	Retain		
1112	Manitoba Maple	<i>Acer negundo</i>	Invasive	22.5	Fair	Retain		
1113	Manitoba Maple	<i>Acer negundo</i>	Invasive	29.5	Fair	Retain		
1114	Manitoba Maple	<i>Acer negundo</i>	Invasive	27.8	Fair	Retain		
1115	Manitoba Maple	<i>Acer negundo</i>	Invasive	20.7, 16.6	Fair	Retain		
1116	Manitoba Maple	<i>Acer negundo</i>	Invasive	29.1	Fair	Retain		
1117	Manitoba Maple	<i>Acer negundo</i>	Invasive	15.6	Fair	Retain		
1118	Manitoba Maple	<i>Acer negundo</i>	Invasive	23.4	Fair	Retain		
1119	Manitoba Maple	<i>Acer negundo</i>	Invasive	19.5, 15.7	Poor	Retain		
1120	Manitoba Maple	<i>Acer negundo</i>	Invasive	26.7, 21.4, 15.6	Fair	Retain		
1121	Manitoba Maple	<i>Acer negundo</i>	Invasive	24.2	Fair	Retain		
1122	Manitoba Maple	<i>Acer negundo</i>	Invasive	26.5	Fair	Retain		
1123	Manitoba Maple	<i>Acer negundo</i>	Invasive	30.1	Fair	Retain		
1124	Manitoba Maple	<i>Acer negundo</i>	Invasive	25.5, 22.7	Fair	Retain		
1125	Black Walnut	<i>Juglans nigra</i>	Native	28.3	Good	Retain		
1126	Manitoba Maple	<i>Acer negundo</i>	Invasive	20.5, 18.5, 18.4	Poor	Retain		
1127	Manitoba Maple	<i>Acer negundo</i>	Invasive	23, 20, 20, 15	Fair	Retain		
1128	Manitoba Maple	<i>Acer negundo</i>	Invasive	17.0	Poor	Retain		
1129	Manitoba Maple	<i>Acer negundo</i>	Invasive	27.4, 12.5	Fair	Retain		
1130	Manitoba Maple	<i>Acer negundo</i>	Invasive	37.0, 30	Fair	Retain		
1131	Manitoba Maple	<i>Acer negundo</i>	Invasive	15.5	Poor	Retain		
1132	Manitoba Maple	<i>Acer negundo</i>	Invasive	27.0, 22	Poor	Retain		
1133	Manitoba Maple	<i>Acer negundo</i>	Invasive	30.6	Very Poor	Retain		
1134	Manitoba Maple	<i>Acer negundo</i>	Invasive	26.6	Poor	Retain		
1135	Balsam Poplar	<i>Populus balsamifera</i>	Native	11.6	Dead	Retain		
1136	Balsam Poplar	<i>Populus balsamifera</i>	Native	18.0	Dead	Retain		
1137	Balsam Poplar	<i>Populus balsamifera</i>	Native	15.0	Dead	Retain		
1138	Balsam Poplar	<i>Populus balsamifera</i>	Native	20.0	Dead	Retain		

Tree Number	Common Name	Scientific Name	Native / Non-native	DBH (cm)	Overall Condition	Proposed Action	Rationale for Removal	Compensation Required
1139	Balsam Poplar	<i>Populus balsamifera</i>	Native	22.3	Poor	Retain		
1140	Balsam Poplar	<i>Populus balsamifera</i>	Native	30.0	Dead	Retain		
1141	Manitoba Maple	<i>Acer negundo</i>	Invasive	20.6	Fair	Retain		
1142	Trembling Aspen	<i>Populus tremuloides</i>	Native	22.8	Dead	Retain		
1143	Trembling Aspen	<i>Populus tremuloides</i>	Native	26.2	Fair	Retain		
1144	Manitoba Maple	<i>Acer negundo</i>	Invasive	15.5	Fair	Retain		
1145	Trembling Aspen	<i>Populus tremuloides</i>	Native	11.0	Fair	Retain		
1146	Manitoba Maple	<i>Acer negundo</i>	Invasive	11, 11	Very Poor	Retain		
1147	Manitoba Maple	<i>Acer negundo</i>	Invasive	19.4	Fair	Retain		
1148	Manitoba Maple	<i>Acer negundo</i>	Invasive	16.0	Fair	Retain		
1149	Manitoba Maple	<i>Acer negundo</i>	Invasive	14.8	Fair	Retain		
1150	Manitoba Maple	<i>Acer negundo</i>	Invasive	15.2	Poor	Retain		
1151	Manitoba Maple	<i>Acer negundo</i>	Invasive	12.0	Fair	Retain		
1152	White Elm	<i>Ulmus americana</i>	Native	18.5, 16.0	Fair	Retain		
1153	Manitoba Maple	<i>Acer negundo</i>	Invasive	18.6, 14.0	Very Poor	Retain		
1154	Manitoba Maple	<i>Acer negundo</i>	Invasive	13.0	Very Poor	Retain		
1155	Manitoba Maple	<i>Acer negundo</i>	Invasive	23.4	Fair	Retain		
1217	Black Walnut	<i>Juglans nigra</i>	Native	24.5	Poor	Retain		
1218	Black Walnut	<i>Juglans nigra</i>	Native	12.9, 11.8	Good	Retain		
1219	Black Walnut	<i>Juglans nigra</i>	Native	19.1, 18.8	Fair	Retain		
1220	Balsam Poplar	<i>Populus balsamifera</i>	Native	82	Poor	Retain		
1221	Manitoba Maple	<i>Acer negundo</i>	Invasive	20	Fair	Retain		
1222	Eastern White Cedar	<i>Thuja occidentalis</i>	Native	10.0	Fair	Retain		
1223	Norway Maple	<i>Acer platanoides</i>	Non-Native	59.9	Poor	Retain		
1224	Norway Maple	<i>Acer platanoides</i>	Non-Native	53.9	Poor	Retain		
1225	Manitoba Maple	<i>Acer negundo</i>	Invasive	32.8, 14.8	Fair	Retain		
1226	Black Walnut	<i>Juglans nigra</i>	Native	17.1	Fair	Retain		
1227	Norway Maple	<i>Acer platanoides</i>	Non-Native	92.3	Fair	Retain		
1228	Black Walnut	<i>Juglans nigra</i>	Native	23.2	Fair	Retain		
1229	Manitoba Maple	<i>Acer negundo</i>	Invasive	50.0, 35.5, 26.7, 21.5	Poor	Retain		
1230	Black Walnut	<i>Juglans nigra</i>	Native	12.8	Fair	Retain		



Tree Number	Common Name	Scientific Name	Native / Non-native	DBH (cm)	Overall Condition	Proposed Action	Rationale for Removal	Compensation Required
1231	Manitoba Maple	<i>Acer negundo</i>	Invasive	45.1	Poor	Retain		
1232	Manitoba Maple	<i>Acer negundo</i>	Invasive	45.1	Fair	Retain		
1233	Manitoba Maple	<i>Acer negundo</i>	Invasive	20.6	Fair	Retain		
1234	Manitoba Maple	<i>Acer negundo</i>	Invasive	27.4, 18.4	Fair	Retain		
1235	Manitoba Maple	<i>Acer negundo</i>	Invasive	28.0	Poor	Retain		
1236	Manitoba Maple	<i>Acer negundo</i>	Invasive	47.6	Fair	Retain		
1237	Manitoba Maple	<i>Acer negundo</i>	Invasive	63.6	Poor	Retain		
1301	Manitoba Maple	<i>Acer negundo</i>	Invasive	57.7	Fair	Retain		
1302	Manitoba Maple	<i>Acer negundo</i>	Invasive	28.8, 18.2	Poor	Retain		
1303	Manitoba Maple	<i>Acer negundo</i>	Invasive	34.7, 26.3	Poor	Retain		
1305	White Spruce	<i>Picea glauca</i>	Native	26.7	Good	Retain		
1306	Manitoba Maple	<i>Acer negundo</i>	Invasive	52.8	Fair	Retain		
1307	Manitoba Maple	<i>Acer negundo</i>	Invasive	19.1	Very Poor	Retain		
1308	Manitoba Maple	<i>Acer negundo</i>	Invasive	17.8	Very Poor	Retain		
1309	Manitoba Maple	<i>Acer negundo</i>	Invasive	11.8, 11.1	Fair	Retain		
1310	Manitoba Maple	<i>Acer negundo</i>	Invasive	19.9	Fair	Retain		
1311	Manitoba Maple	<i>Acer negundo</i>	Invasive	13.3	Poor	Retain		
1312	Manitoba Maple	<i>Acer negundo</i>	Invasive	12.2	Poor	Retain		
1313	Manitoba Maple	<i>Acer negundo</i>	Invasive	28.2	Fair	Retain		
1314	Manitoba Maple	<i>Acer negundo</i>	Invasive	14.8	Poor	Retain		
1315	Manitoba Maple	<i>Acer negundo</i>	Invasive	25.3	Fair	Retain		
1316	Manitoba Maple	<i>Acer negundo</i>	Invasive	42.1	Poor	Retain		
1317	Manitoba Maple	<i>Acer negundo</i>	Invasive	19.8	Fair	Retain		
1318	Manitoba Maple	<i>Acer negundo</i>	Invasive	31.0	Poor	Retain		
1319	Manitoba Maple	<i>Acer negundo</i>	Invasive	22.4	Fair	Retain		
1320	Manitoba Maple	<i>Acer negundo</i>	Invasive	16.8, 11.2	Fair	Retain		
1337	Manitoba Maple	<i>Acer negundo</i>	Invasive	22.9, 19.3, 17.9, 12.7	Fair	Retain		
1338	Manitoba Maple	<i>Acer negundo</i>	Invasive	15.6	Fair	Retain		
1339	Manitoba Maple	<i>Acer negundo</i>	Invasive	27.9	Very Poor	Retain		
1340	Manitoba Maple	<i>Acer negundo</i>	Invasive	40.9	Fair	Retain		
1342	Black Walnut	<i>Juglans nigra</i>	Native	25.6	Fair	Retain		

Tree Number	Common Name	Scientific Name	Native / Non-native	DBH (cm)	Overall Condition	Proposed Action	Rationale for Removal	Compensation Required
1344	Norway Maple	<i>Acer platanoides</i>	Non-Native	80.2	Fair	Retain		
1345	Manitoba Maple	<i>Acer negundo</i>	Invasive	17.2, 15.8	Fair	Retain		
1346	Manitoba Maple	<i>Acer negundo</i>	Invasive	35.6	Fair	Retain		
1347	Manitoba Maple	<i>Acer negundo</i>	Invasive	58.5	Poor	Retain		
1348	Manitoba Maple	<i>Acer negundo</i>	Invasive	26.0	Fair	Retain		
1349	Manitoba Maple	<i>Acer negundo</i>	Invasive	15.9, 15.5	Poor	Retain		
1352	Manitoba Maple	<i>Acer negundo</i>	Invasive	14.0	Fair	Retain		
1353	Manitoba Maple	<i>Acer negundo</i>	Invasive	10.6	Fair	Retain		
1359	Manitoba Maple	<i>Acer negundo</i>	Invasive	21.6, 13.1	Fair	Retain		
1360	Manitoba Maple	<i>Acer negundo</i>	Invasive	16.4, 12.2	Poor	Retain		
1363	Manitoba Maple	<i>Acer negundo</i>	Invasive	23.3	Fair	Retain		
1364	Manitoba Maple	<i>Acer negundo</i>	Invasive	24.6, 22.6	Fair	Retain		
1365	Manitoba Maple	<i>Acer negundo</i>	Invasive	10.9	Fair	Retain		
1375	Manitoba Maple	<i>Acer negundo</i>	Invasive	23.3	Poor	Retain		
1388	Manitoba Maple	<i>Acer negundo</i>	Invasive	27.5	Fair	Retain		
1389	Manitoba Maple	<i>Acer negundo</i>	Invasive	17.5	Fair	Retain		
1390	Manitoba Maple	<i>Acer negundo</i>	Invasive	41.1	Fair	Retain		
1399	Manitoba Maple	<i>Acer negundo</i>	Invasive	18.3	Very Poor	Retain		
1400	Manitoba Maple	<i>Acer negundo</i>	Invasive	26.7, 24.6, 24.6	Fair	Retain		
1401	Manitoba Maple	<i>Acer negundo</i>	Invasive	33.8, 37.4	Fair	Retain		
1402	Manitoba Maple	<i>Acer negundo</i>	Invasive	14, 13, 13	Fair	Retain		
1403	Manitoba Maple	<i>Acer negundo</i>	Invasive	31.2	Fair	Retain		
1404	Manitoba Maple	<i>Acer negundo</i>	Invasive	13.7	Very Poor	Retain		
1405	Manitoba Maple	<i>Acer negundo</i>	Invasive	36.5, 17.5	Fair	Retain		
1406	Manitoba Maple	<i>Acer negundo</i>	Invasive	16.6, 17.1, 16.4	Fair	Retain		
1407	Manitoba Maple	<i>Acer negundo</i>	Invasive	23.2	Fair	Retain		
1408	Manitoba Maple	<i>Acer negundo</i>	Invasive	49.9	Fair	Retain		
1409	Manitoba Maple	<i>Acer negundo</i>	Invasive	17.1	Poor	Retain		
1410	Manitoba Maple	<i>Acer negundo</i>	Invasive	20.0	Fair	Retain		
1411	Manitoba Maple	<i>Acer negundo</i>	Invasive	27.2, 22.2	Fair	Retain		
1413	Manitoba Maple	<i>Acer negundo</i>	Invasive	39.8	Fair	Retain		
1414	Manitoba Maple	<i>Acer negundo</i>	Invasive	14.0	Good	Retain		
1415	Crack Willow	<i>Salix fragilis</i>	Non-Native	43.3	Good	Retain		

Tree Number	Common Name	Scientific Name	Native / Non-native	DBH (cm)	Overall Condition	Proposed Action	Rationale for Removal	Compensation Required
1417	Manitoba Maple	<i>Acer negundo</i>	Invasive	15.5	Good	Retain		
1418	Manitoba Maple	<i>Acer negundo</i>	Invasive	14.0	Good	Retain		
1419	Manitoba Maple	<i>Acer negundo</i>	Invasive	14.0	Poor	Retain		
1420	Crack Willow	<i>Salix fragilis</i>	Non-Native	44.8, 42.7	Fair	Retain		
1421	Manitoba Maple	<i>Acer negundo</i>	Invasive	16.6	Fair	Retain		
1422	Manitoba Maple	<i>Acer negundo</i>	Invasive	24.4	Poor	Retain		
1423	Manitoba Maple	<i>Acer negundo</i>	Invasive	18.0	Fair	Retain		
1424	Manitoba Maple	<i>Acer negundo</i>	Invasive	20.5	Very Poor	Retain		
1425	Manitoba Maple	<i>Acer negundo</i>	Invasive	31.5	Poor	Retain		
1426	Manitoba Maple	<i>Acer negundo</i>	Invasive	38.8, 33, 25.5	Fair	Retain		
1427	Manitoba Maple	<i>Acer negundo</i>	Invasive	24.5, 26.2, 16.2	Poor	Retain		
1428	Manitoba Maple	<i>Acer negundo</i>	Invasive	28.5	Poor	Retain		
1429	Crack Willow	<i>Salix fragilis</i>	Non-Native	70, 65	Fair	Retain		
1430	Crack Willow	<i>Salix fragilis</i>	Non-Native	47.8, 47.5	Fair	Retain		
1431	Crack Willow	<i>Salix fragilis</i>	Non-Native	62	Fair	Retain		
1432	Manitoba Maple	<i>Acer negundo</i>	Invasive	16.5, 14.6	Poor	Retain		
1433	Black Walnut	<i>Juglans nigra</i>	Native	19.2	Fair	Retain		
1434	Black Walnut	<i>Juglans nigra</i>	Native	19.4	Fair	Retain		
1435	Black Walnut	<i>Juglans nigra</i>	Native	11.5	Fair	Retain		
1436	Green Ash	<i>Fraxinus pennsylvanica</i>	Native	43.2, 37.4	Very Poor	Retain		
1437	Crack Willow	<i>Salix fragilis</i>	Non-Native	45.8	Poor	Retain		
1438	Manitoba Maple	<i>Acer negundo</i>	Invasive	17.2	Fair	Retain		
1439	Black Walnut	<i>Juglans nigra</i>	Native	40.4	Good	Retain		
1440	Manitoba Maple	<i>Acer negundo</i>	Invasive	12.5	Very Poor	Retain		
1441	Black Walnut	<i>Juglans nigra</i>	Native	11.5	Fair	Retain		
1442	Manitoba Maple	<i>Acer negundo</i>	Invasive	12.5	Fair	Retain		
1443	Manitoba Maple	<i>Acer negundo</i>	Invasive	11.0	Fair	Retain		
1444	Manitoba Maple	<i>Acer negundo</i>	Invasive	12.5	Fair	Retain		
1445	Manitoba Maple	<i>Acer negundo</i>	Invasive	22.5, 14.2, 12.2, 11.5	Poor	Retain		
1446	Black Walnut	<i>Juglans nigra</i>	Native	30.9	Fair	Retain		
1447	Manitoba Maple	<i>Acer negundo</i>	Invasive	21.4	Fair	Retain		
1448	Manitoba Maple	<i>Acer negundo</i>	Invasive	14.5	Poor	Retain		
1449	Manitoba Maple	<i>Acer negundo</i>	Invasive	37.8	Good	Retain		
1450	Manitoba Maple	<i>Acer negundo</i>	Invasive	16.7	Fair	Retain		

Tree Number	Common Name	Scientific Name	Native / Non-native	DBH (cm)	Overall Condition	Proposed Action	Rationale for Removal	Compensation Required
1451	Manitoba Maple	<i>Acer negundo</i>	Invasive	11.9	Poor	Retain		
1452	Manitoba Maple	<i>Acer negundo</i>	Invasive	31.5	Good	Retain		
1453	Manitoba Maple	<i>Acer negundo</i>	Invasive	49.5	Very Poor	Retain		
1454	Black Walnut	<i>Juglans nigra</i>	Native	12.5	Fair	Retain		
1455	Manitoba Maple	<i>Acer negundo</i>	Invasive	18.5, 15	Poor	Retain		
1456	Manitoba Maple	<i>Acer negundo</i>	Invasive	14.5	Fair	Retain		
1457	Black Walnut	<i>Juglans nigra</i>	Native	10.2	Fair	Retain		
1458	Manitoba Maple	<i>Acer negundo</i>	Invasive	17.9, 13.1	Fair	Retain		
1459	Manitoba Maple	<i>Acer negundo</i>	Invasive	10.8, 10.9	Fair	Retain		
1460	Black Walnut	<i>Juglans nigra</i>	Native	14.6	Fair	Retain		
1461	Black Walnut	<i>Juglans nigra</i>	Native	32.5	Fair	Retain		
1462	Black Walnut	<i>Juglans nigra</i>	Native	15.4	Good	Retain		
1463	Manitoba Maple	<i>Acer negundo</i>	Invasive	11.0	Poor	Retain		
1464	Manitoba Maple	<i>Acer negundo</i>	Invasive	10.4, 10.1	Fair	Retain		
1465	Black Walnut	<i>Juglans nigra</i>	Native	16.5, 15.7	Fair	Retain		
1466	Manitoba Maple	<i>Acer negundo</i>	Invasive	14.7	Fair	Retain		
1467	Manitoba Maple	<i>Acer negundo</i>	Invasive	11.7	Fair	Retain		
1468	Manitoba Maple	<i>Acer negundo</i>	Invasive	11.1	Poor	Retain		
1469	Manitoba Maple	<i>Acer negundo</i>	Invasive	15.2, 15.1, 14.5, 10	Poor	Retain		
1470	Manitoba Maple	<i>Acer negundo</i>	Invasive	18.8	Fair	Retain		
1471	Manitoba Maple	<i>Acer negundo</i>	Invasive	10.9, 10.9	Fair	Retain		
1472	Manitoba Maple	<i>Acer negundo</i>	Invasive	10.2	Fair	Retain		
1473	Black Walnut	<i>Juglans nigra</i>	Native	13.5	Fair	Retain		
1474	Norway Maple	<i>Acer platanoides</i>	Non-Native	66.4	Poor	Retain		
1475	Manitoba Maple	<i>Acer negundo</i>	Invasive	55.2	Good	Retain		
1476	Prunus species	<i>Prunus sp.</i>	Non-Native	11.2, 10.5	Fair	Retain		
1477	Manitoba Maple	<i>Acer negundo</i>	Invasive	31.0	Fair	Retain		
1478	Manitoba Maple	<i>Acer negundo</i>	Invasive	52.6, 22.6	Fair	Retain		
1479	Manitoba Maple	<i>Acer negundo</i>	Invasive	20.8	Fair	Retain		
1480	Manitoba Maple	<i>Acer negundo</i>	Invasive	17.9, 11.0	Fair	Retain		
1481	Manitoba Maple	<i>Acer negundo</i>	Invasive	44.1	Fair	Retain		
1482	Manitoba Maple	<i>Acer negundo</i>	Invasive	25.5	Fair	Retain		
1483	Manitoba Maple	<i>Acer negundo</i>	Invasive	39.2	Fair	Retain		

Tree Number	Common Name	Scientific Name	Native / Non-native	DBH (cm)	Overall Condition	Proposed Action	Rationale for Removal	Compensation Required
1484	Black Walnut	<i>Juglans nigra</i>	Native	40.5	Fair	Retain		
1485	Norway Spruce	<i>Picea abies</i>	Non-Native	16.5	Poor	Retain		
1486	White Spruce	<i>Picea glauca</i>	Native	29.9	Fair	Retain		
1512	Silver Maple	<i>Acer saccharinum</i>	Native		Fair	Retain		
1513	Silver Maple	<i>Acer saccharinum</i>	Native	20.3, 15.8	Fair	Retain		
1514	Silver Maple	<i>Acer saccharinum</i>	Native	31.5	Fair	Retain		
1515	Silver Maple	<i>Acer saccharinum</i>	Native	21.5, 12.1	Fair	Retain		
1516	Silver Maple	<i>Acer saccharinum</i>	Native	13.5	Fair	Retain		
1517	Silver Maple	<i>Acer saccharinum</i>	Native	25.1, 15.3	Fair	Retain		
A	Sugar Maple	<i>Acer saccharum</i>		47.8	Fair	Retain		
B	Horsechestnut	<i>Aesculus hippocastanum</i>	Non-Native	40, 35	Fair	Retain		
JUG-001	Butternut	<i>Juglans cinerea</i>	Native	15.5	Good	Retain		

Category	Tree Count
Dead/Very Poor/Poor Trees to be Removed	184
Invasive Trees to be Removed	198
Other Trees to be Removed	4
Total Tree Removals	386
Total Trees Requiring Compensation	202
Total Compensation Trees to Be Planted	202*

\*Trees will include an equal mix of native species such as Red Oak (*Quercus rubra*), Sugar Maple (*Acer saccharum*), Trembling Aspen (*Populus tremuloides*), and White Pine (*Pinus strobus*).

\*At least 25% of the trees installed will be large caliper stock (50mm diameter) with the remaining being smaller (1 gallon pots) to avoid the need for heavy equipment within the natural area for installation

## Large caliper stock (50mm diameter) trees

Generally speaking:

Litre	Calliper	Height	Spread
100	40 - 50mm	2.5-3.5m	1-2 m

<https://winterhill.com.au/tree-sizes/>

## Red Oak (Quercus rubra)



<https://kb.jnplants.com/red-oak-quercus-rubra/>





<https://kb.jnplants.com/red-oak-quercus-rubra/>

## Sugar Maple (*Acer saccharum*)

<https://kb.jnplants.com/fall-fiesta-sugar-maple-acer-saccharum-bailsta/>





## Trembling Aspen (*Populus tremuloides*)



<https://kb.jnplants.com/quaking-aspen-populus-tremuloides/>



<https://kb.jnplants.com/quaking-aspen-populus-tremuloides/>



White Pine (*Pinus strobus*)



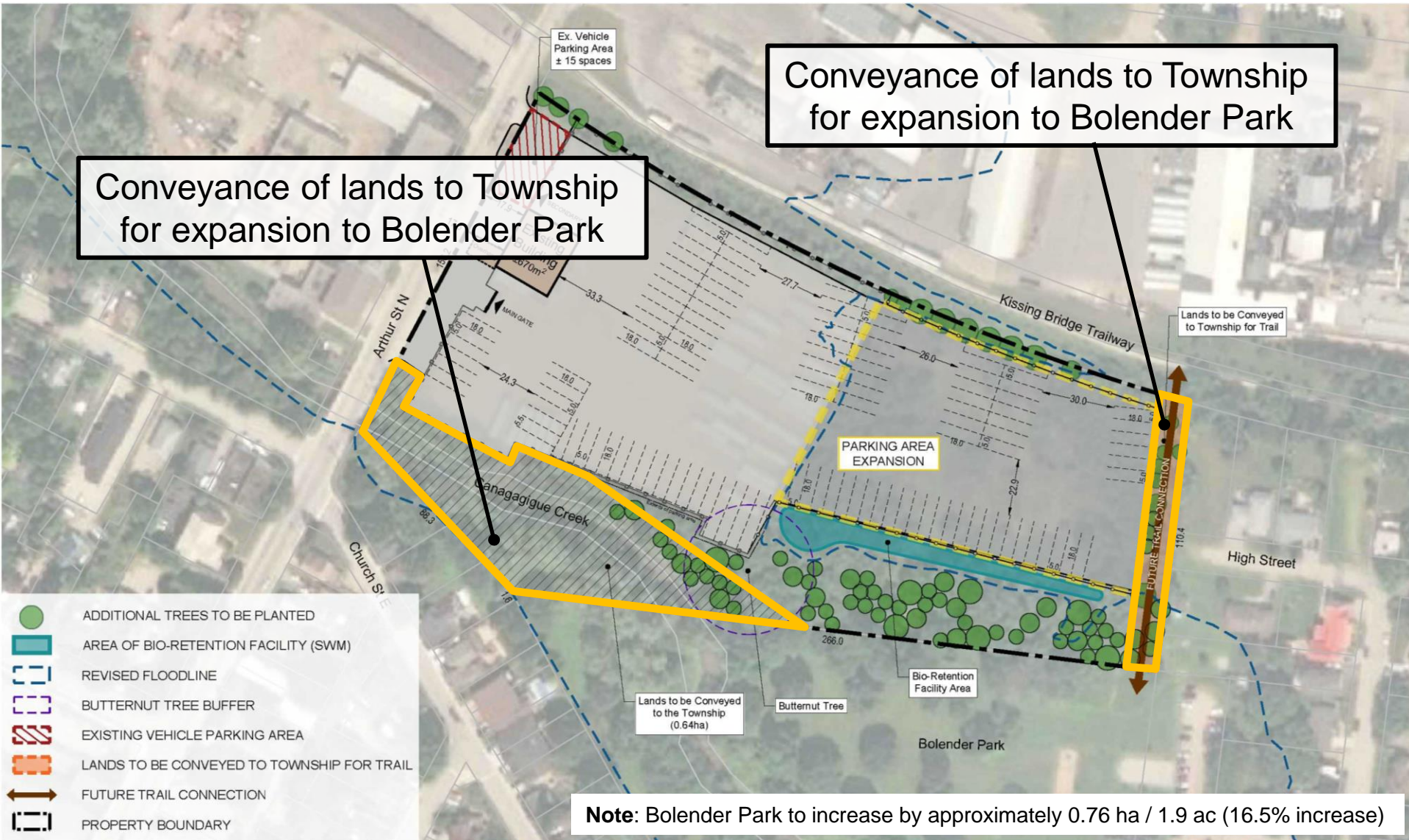
<https://kb.jnplants.com/eastern-white-pine-pinus-strobus/>

## 1 Gallon (Smaller) Stock





# Proposed Development





# View from Bolender Park

