

The background image is a photograph of a wooden covered bridge over a river. A person is riding a bicycle across the bridge. The image has a blue color overlay. A dark blue rectangular box is positioned on the left side of the image, containing the title and subtitle text.

# Township of Woolwich

---

## Special Council Meeting

# Our Planning Team



**MARY LOU TANNER**  
Principal Planner



**HEATHER SEWELL**  
Manager of Planning

# Today's Agenda

- Today's Meeting – Section 26 Special Council Meeting
- Official Plans and their Role
- Why did the Township Initiate an Official Plan Review?
- Regional Official Plan Highlights
- Changes to your Official Plan
- Community Engagement
- Establishing a Community, Vision, Goals and Objectives



# Today's Meeting

The Ontario *Planning Act*, Section 26.3

*Consultation and special meeting*

*(3) Before revising the official plan under subsection (1), the council shall,*

*(a) consult with the approval authority and with the prescribed public bodies with respect to the revisions that may be required; and*

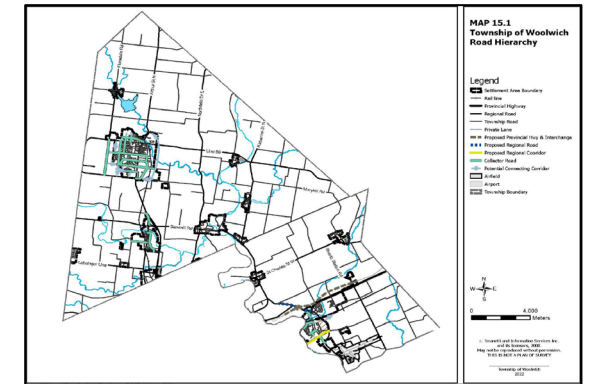
*(b) hold a special meeting of council, open to the public, to discuss the revisions that may be required. 2006, c. 23, s. 13.*

# Official Plans and their Role

- ✓ Identify policies and objectives to guide physical development of lands within the Township of Woolwich
- ✓ Provide details on how and where the community will grow
- ✓ Address how upper level plans will be implemented (e.g. Region of Waterloo)
- ✓ Implemented by the Zoning By-law, Subdivision and Site Plan Control through Capital Budgets add other by-laws and municipal activities

# Official Plan – The Document

- Comprised of Text and Mapping
- Objectives and policies regarding development of land in the Township of Woolwich
- Classifying land into designations and categories
- Road network mapping
- Constraints mapping



# Why did the Township Initiate an Official Plan Review?



# Key Policy and Legislation

## PPS 2020

- Increased Focus on Housing
- Market Demand for Growth
- Protection of Employment Lands

## Bill 109 and Bill 23

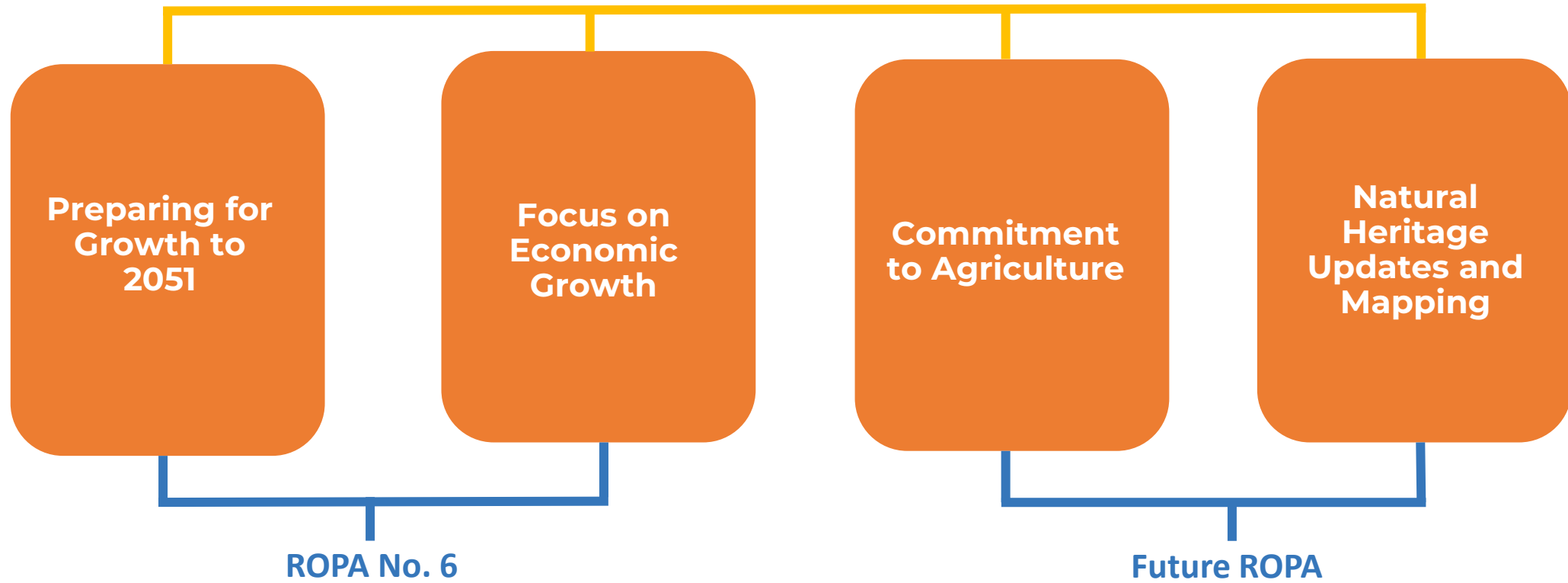
- Prioritization of increased housing supply

## Growth Plan 2020

- Population and Employment Forecasts
- Aggregates Framework
- Employment Lands Near Transit



# Waterloo Region Official Plan Review



# Regional Official Plan Highlights

Housing and Growth

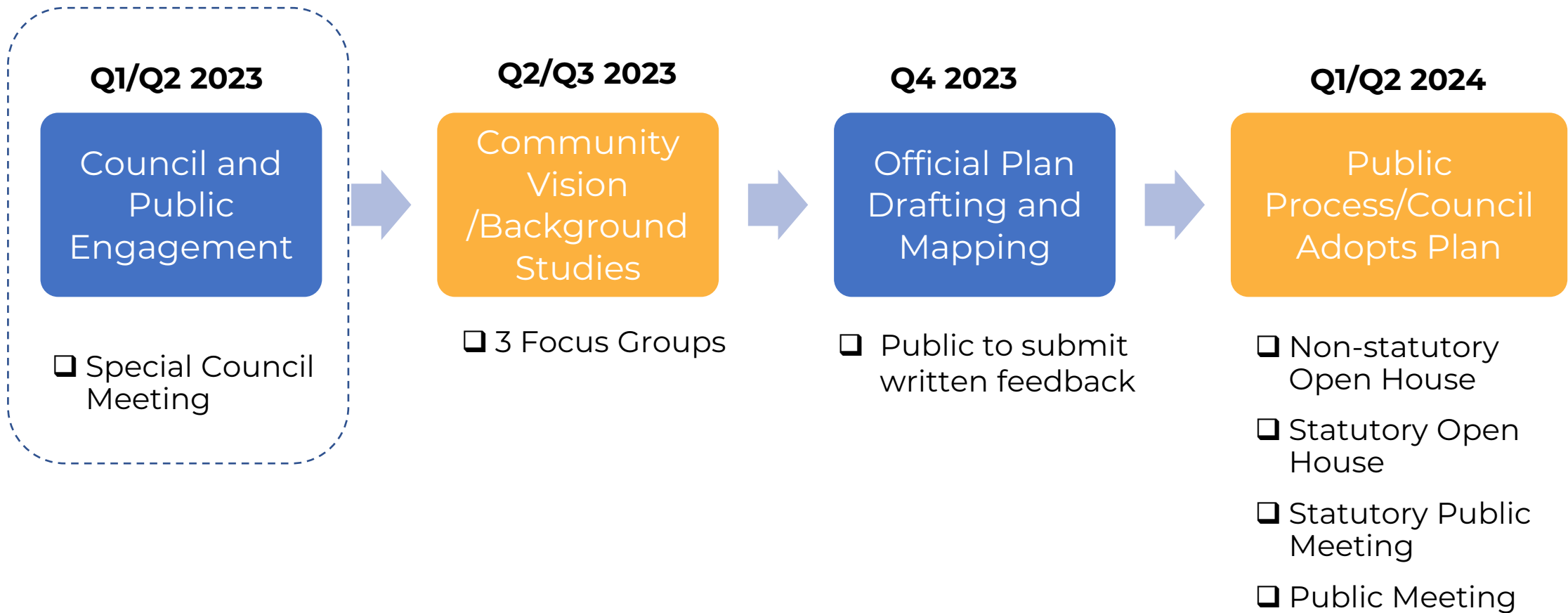
**Projected Population Growth (2051): 23,200**

**Projected Housing Growth (2051): 8,200**

**Employment Growth (2051): 8,300**

# Community Engagement

## Where you can get involved



# Community Engagement

## How can you get involved?

- ✓ Attend Open Houses and Public Meetings to learn about the Plan
- ✓ Provide opinion at Public Meetings
- ✓ Provide input and feedback at meetings, online survey, and by phone
- ✓ Written submissions via e-mail or letter to Council or to the Township of Woolwich



# Establishing a Community Vision, Goals and Objectives

## Focus Group Sessions

Township of  
Woolwich  
Administrative  
Office

WHERE



Thursday, April  
20<sup>th</sup>, 2023

WHEN



10am – 12pm  
&  
7pm – 9pm

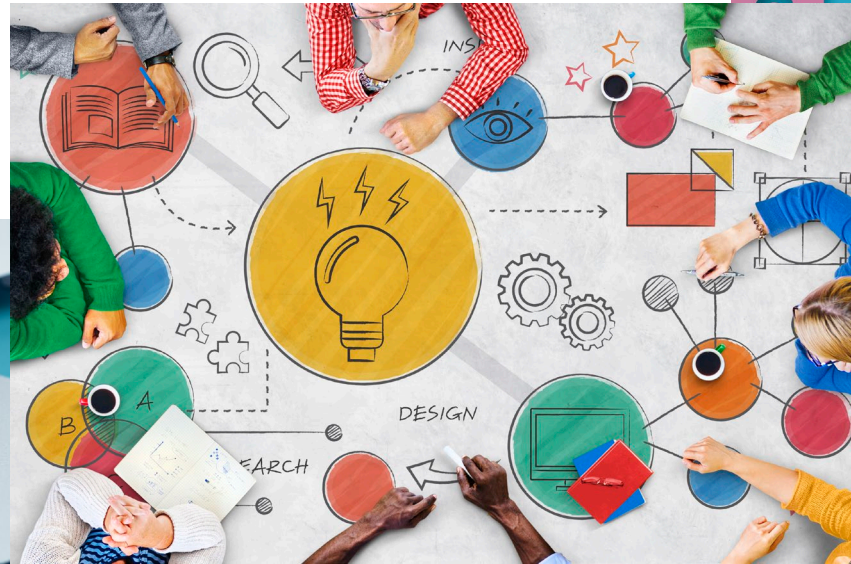
TIME





# We Want to Hear From You!

Open to Questions



Feedback from Council and the Public