

# Breslau Drain 1

## Report Consideration



**October 17, 2023**  
**Joel Miller, P. Eng.**





# Breslau Drain 1 Overview

- Built in **1954** for a largely agricultural watershed.
- Watershed area **240.6** hectares (595 acres)
- Proposed drain length is **3,725m** (1,000m ditch, 2,725m pipe)





# Project Impetus

- **Sept/Oct 2018**  
Landowner requests under Section 78 of the Drainage Act and a landowner petition under Section 4.
- **Nov 2018**  
Council appointed K. Smart Associates for a **Preliminary Report** to evaluate options.





# Final Report Phase

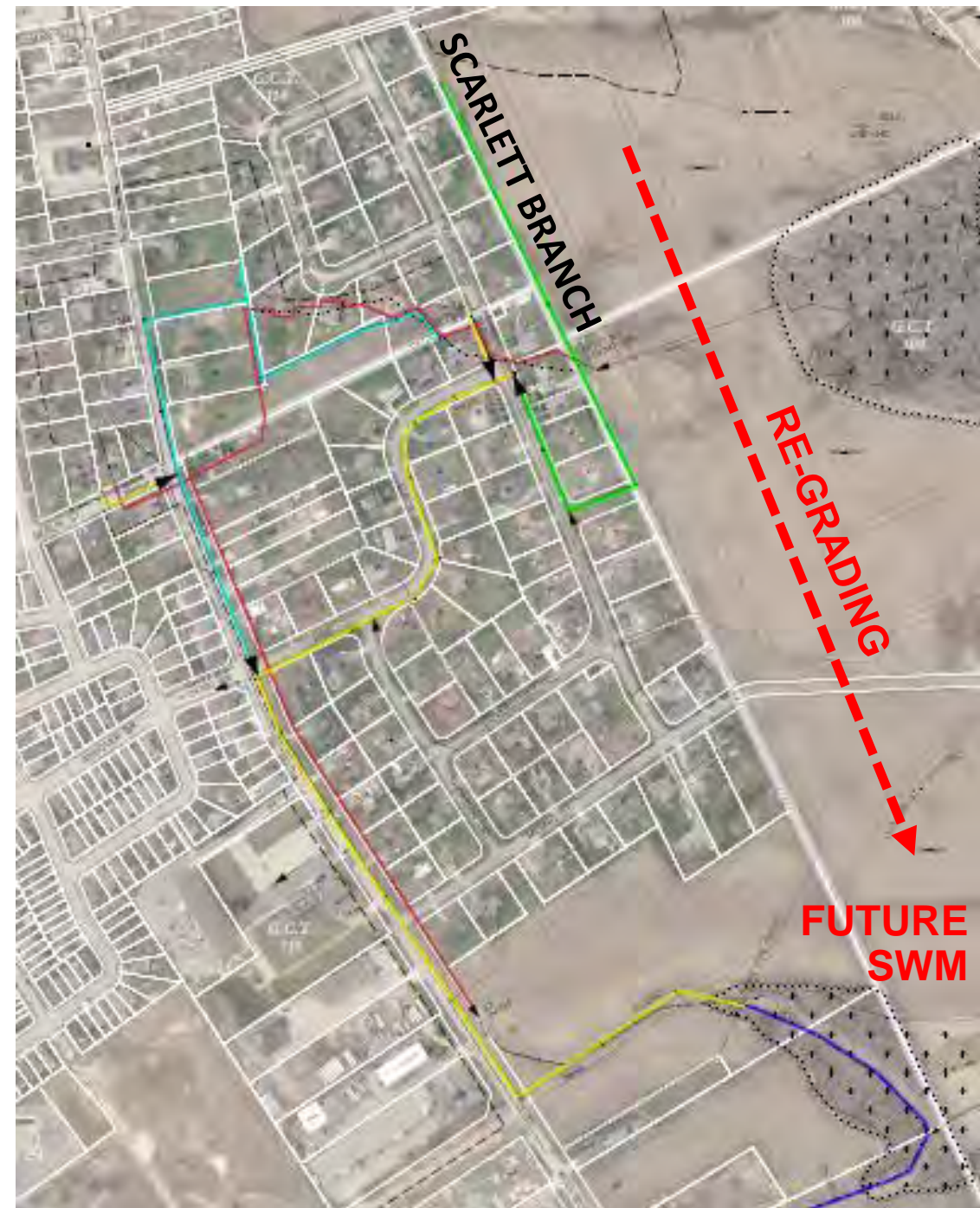
- **Dec 2019**  
Council received Preliminary Report and gave direction for a final report to replace undersized drain.
- **April 2022**  
Section 4 petition from development lands (Madwest Breslau Limited) for upstream extension of Breslau Drain 1.





# Design Highlights

- Upstream extension to intercept rear-yard drainage from development lands is the **Scarlett Branch**.
- Re-grading to south of development lands into a future SWM facility **reduces** the catchment upstream of Elroy Acres from **28ha to 1ha**.





# Pipe Sizing

- Per catchment boundaries shown (Appendix C in report)
- 5-year event along roads
- 2-year event along yards where drain crosses private lands due to lot grading.





# Ditch Portion

- No work through wetland now. Future obstruction removal as needed, no ditch deepening.
- Existing Woolwich Street culvert in good condition and carries 100-year event, no work now.
- Cleanout and bank protection downstream of Woolwich St.
- Drain outlet as per location in Preliminary Report





# Estimated Cost - \$5.65M

Description		TOTAL
Drainage works	\$3,167,795	
Township roads and utilities	\$1,024,200	
Contingencies and overhead	\$406,660	
<b>Construction Subtotal</b>		<b>\$4,598,655</b>
<b>Engineering</b>		<b>\$657,700</b>
<b>Allowances</b>		<b>\$57,850</b>
<b>Section 73 Costs</b>		<b>\$243,275</b>
<b>Net HST on applicable costs</b>		<b>\$92,520</b>
<b>TOTAL</b>		<b>\$5,650,000</b>





# Distribution of *Drainage Act* Assessments

Category	Assessment	Portion
Residential	\$525,000	9.3%
Commercial	\$114,300	2.0%
Region	\$39,700	0.7%
Hydro	\$30,200	0.5%
Development Lands	\$2,705,600	47.9%
Township	\$2,235,200	39.6%
TOTAL	\$5,650,000	100%

Separate Court of Revision meeting is venue for drain assessment detail and discussion









# Questions?

